

Classifications

| | |
|-----------------------|---------------------------|
| EN ISO 14343-A | AWS A5.9 / SFA-5.9 |
| S 13 4 | ER410NiMo (mod.) |

Characteristics and typical fields of application

SAW wire of 13 4 / ER410NiMo (mod.) type for joining and surfacing applications with matching 13Cr(Ni) and 13Cr-steels and cast steel grades. Soft-martensitic; suitable for quenching and tempering. High resistance to corrosion fatigue cracking. Corrosion resistance similar to matching 13Cr(Ni)-steels and cast steel grades.

Recommended fluxes:

Marathon 104
Marathon 203
Marathon 801

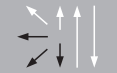
Base materials

1.4313 X3CrNiMo13-4, 1.4317 GX4CrNi13-4
1.4407 GX5CrNiMo13-4, 1.4414 GX4CrNiMo13-4
ACI Grade CA 6 NM, UNS S41500

Typical analysis

| | C | Si | Mn | Cr | Ni | Mo |
|-------|------|-----|-----|------|-----|-----|
| wt.-% | 0.01 | 0.7 | 0.7 | 12.3 | 4.8 | 0.5 |

Operating data



Dimension mm

2.4
3.0

Approvals

-