

A GLOBAL PROVIDER OF ENHANCED THERMAL CUTTING SOLUTIONS



EX-TRAFIRE[®]

PLASMA CUTTING SYSTEMS CATALOG



THERMACUT[®] - THE CUTTING COMPANY[®]
10092024

WWW.THERMACUT.COM
SALES@THERMACUT.COM

FROM THE WORKSHOP TO THE SHIPYARD.

"A successful product begins with a simple idea".

The idea was to create a plasma cutting power supply. Criteria were set precisely. It has to be powerful, versatile, easy to operate, durable and portable.

AND WE CREATED IT.
IT IS CALLED
EX-TRAFIRE®.

EX-TRAFIRE® PLASMA SYSTEMS

TABLE OF CONTENTS

OVERVIEW	PAGE
EX-TRAFIRE® HD EX-TRAFIRE® HD LINE	6
EX-TRAFIRE® 85HD System SPECIFICATIONS	10-13
EX-TRAFIRE® 105HD System SPECIFICATIONS	14-19
FHT-EX® 105TT PLASMA TORCH Hand Torch SPECIFICATIONS Machine Torch SPECIFICATIONS	20-33 23-26 27-33
EX-TRAFIRE® 125HD System SPECIFICATIONS	34-39
FHT-EX® 125TT PLASMA TORCH Hand Torch SPECIFICATIONS Machine Torch SPECIFICATIONS	40-53 43-45 46-53
ACCESSORIES EX-TRAFIRE® ACCESSORIES	54-55

A close-up photograph of an industrial cutting machine. A blue torch is positioned to cut a piece of metal. A person's hand is visible, holding a control panel with a screen and buttons. The background is a blurred industrial setting.

EX-TRA

INDUSTRIAL CUTTING. HEAVY-



EX-TAFIRE[®] 125HD

HEAVY-DUTY PERFORMANCE.

EX-TAFIRE[®] 125HD

EX-TRAFIRE® HD LINE OVERVIEW



Features / System	EX-TRAFIRE [®] 85HD	EX-TRAFIRE [®] 105HD	EX-TRAFIRE [®] 125HD
Operating Processes Operating Modes	Smoothline cutting, Drag cutting, Machine Cutting Grid cutting, Gouging, Marking		
Cutting current	20-85 A	20-105 A	20-125 A
Input voltage	1 × 200-240 / 3 × 208-575 ± 15%	1 × 200-240 / 3 × 208-575 ± 15%	3 × 480 or 3 × 575 ± 15%
Output Amperage Range	20-65 A (1 PH) 20-85 A (3 PH)	20-85 A (1 PH) 20-105 A (3 PH)	30-125 A
Duty cycle	Single Phase 100% @ 50 A (230 VAC) 3-Phase 100% @ 76 A (460-575 VAC)	Single Phase 100% @ 54 A (230 VAC) 3-Phase 100% @ 94 A (460-575 VAC)	3-Phase 100% @ 125 A (460 or 575 VAC)
Rated output voltage [V] DC	140	160	180
Recommended cut capacity*	1 3/8"	1 3/8"	1 1/2"
Severance cut capacity*	2"	2"	2 1/2"
Piercing cutting capacity	1"	1"	1"
Plasma gas	Air / Nitrogen* / Argon**	Air / Nitrogen* / Argon**	Air / Nitrogen* / Argon**
Torch Type Options	Hand Torch Machine Torch Short Machine Torch FHT-EX®105TT	Hand Torch Machine Torch Short Machine Torch FHT-EX®105TT	Hand Torch Machine Torch Short Machine Torch FHT-EX®125TT
Torch flow	101 l/min. at 5.2 bar	156 l/min. at 4.8 bar	175 l/min. at 5.2 bar
Industry (IOT) 4.0	Yes		
Dimensions (L × H × W)	22" × 15.7" × 10.2"	24" × 20" × 12"	24" × 21" × 12"
Weight [kg]	66 lbs	96 lbs	75 lbs

* Nitrogen may be used for cutting stainless steel and aluminum;

** Argon should only be used with the optional marking kit



THERMACUT®, THE CUTTING COMPANY®, FHT-EX®, EX-TRAFIRE®, EX-TRACK®, EX-TRABEAM® AND EX-TRAFLEAME® ARE REGISTERED TRADEMARKS OF THERMACUT, K.S. AND MAY BE REGISTERED IN CZECH REPUBLIC AND/OR OTHER COUNTRIES. ALL OTHER TRADEMARKS ARE PROPERTIES OF THEIR RESPECTIVE OWNERS.

THERMACUT, INC.
PO BOX 842
CLAREMONT, NH 03743

SALES DEPARTMENT
PHONE: +1(800)932-8312
EMAIL: SALES@THERMACUT.COM

SERVICE AND COMPLAINTS DEPARTMENT
EMAIL: SALES@THERMACUT.COM

EX-TRAFIRE[®] 85HD

INDUSTRIAL CUTTING. HEAVY-DUTY PERFORMANCE.

SOLUTIONS / INDUSTRIES



Automotive
and transportation



Education and
Training



General
Fabrication



Structural



EX-TRAFIRE[®] 85HD

85 A

EX-TRAFIRE® 85HD



CUTTING
85 A
CURRENT

MATERIAL
2 inches
THICKNESS

LIGHTWEIGHT
66 lbs

IMPRESSIVE PERFORMANCE



- + Extremely high cutting speed
- + Maximum cutting quality, even with long cuts
- + Also ideal for automated processes

READY FOR INDUSTRY 4.0



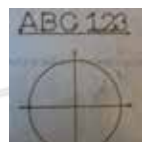
- + Industry leading connectivity
- + CAN / RS 485 / RS 422 Bus interface (optional)
- + Easy monitoring
- + Expandable and updatable

HIGHEST FLEXIBILITY



- + Plate thicknesses up to 2 inches
- + For mechanized and manual applications
- + Gouging with high removal rate
- + Suitable for worldwide use

MARKING MODE



- + Automatic gas identification (air, nitrogen, argon)
- + Integrated gas saving function
- + Fine, deep or wide markings
- + Optional smooth marking for applications below 20 A

AUTOMATIC SETTINGS



- + Cutting gas media, electricity and pilot current
- + Compensation for pressure drops
- + Fewer operating errors, better cutting quality

NEW CUTTING TORCH FHT®EX105TT



- + Torch design award winner
- + Optimized ergonomics
- + Relaxed PE and PA cutting
- + 100 % duty cycle

EX-TRAFIRE® 85HD

SPECIFICATIONS

Cutting current	20-85 A
Modes	cutting / grid cutting / gouging / marking
Duty cycle @ 104 °F	
U ₁ - 1 × 230 VAC	55 % @ 65 A, 100 % @ 50 A
U ₁ - 3 × 208 VAC	40 % @ 85 A ; 100 % @ 54 A
U ₁ - 3 × 460 - 575 VAC	80 % @ 85 A, 100 % @ 76 A
Rated output voltage	140 VDC
Severance cutting capacity *	2"
Piercing capacity *	1"
Gouging Removal	17 lbs/hr
Recommended cutting capacity *	1 3/8"
Plasma gas	compr. air / nitrogen / argon **
Air flow cut pressure	75 PSI
CAN, RS 485, RS 422	optional
Preadjusted voltage divider ratio ***	50:1
Input voltage	1 × 200 - 240 VAC / 3 × 208 - 575 VAC ± 15%
Frequency	50/60 Hz
Dimensions (L × W × H)	22" × 15.7" × 10.2"
Weight	66 lbs
Certification depending on region	CSA
Recommended Min/Max Pressure	90-145 PSI
Protection level	IP23S
Insulation class	F
Type of hand torch	FHT-EX®105TTH
Type of machine torch	FHT-EX®105TTM

* values for low alloy steel, e. g. MS S235JR

** used for optional fine marking

*** part of optional CNC interface

**** I₂ reduced to 65 A at single phase input voltage

4 DIFFERENT OPERATION MODES

The plasma cutting systems in the EX-TRAFIRE®HD range excel at meeting demanding requirements during continuous operation. The portable EX-TRAFIRE®85HD plasma cutting system is the perfect solution for challenging heavy-duty industrial applications.



EX-TRAFIRE® 85HD

ORDERING INFORMATION

Description	Length	Part No.
MANUAL PLASMA CUTTING SYSTEMS		
EX-TRAFIRE®85HD/CSA/200-600 V Hand System/FHT-EX®105TTH Torch 16.4ft/H Starter Kit	16.4 ft	EX-4-010-061
EX-TRAFIRE®85HD/CSA/200-600 V Hand System/FHT-EX®105TTH Torch 26.2ft/H Starter Kit	26.2 ft	EX-4-010-062
EX-TRAFIRE®85HD/CSA/200-600 V Hand System/FHT-EX®105TTH Torch 49.2ft/H Starter Kit	49.2 ft	EX-4-010-063
MECHANIZED PLASMA CUTTING SYSTEMS		
EX-TRAFIRE®85HD/CSA/200-600 V 3-PH Machine System/FULLY EQUIPPED/FHT-EX®105TTM STD-NR Torch 26.2ft/M Starter Kit	26.2 ft	EX-4-011-042
EX-TRAFIRE®85HD/CSA/200-600 V 3-PH Machine System/FULLY EQUIPPED/FHT-EX®105TTM STD-NR Torch 49.2ft/M Starter Kit	49.2 ft	EX-4-011-043
EX-TRAFIRE®85HD/CSA/200-600 V 3-PH Machine System/STD EQUIPPED/FHT-EX®105TTM STD-NR Torch 26.2ft/M Starter Kit	26.2 ft	EX-4-013-014
EX-TRAFIRE®85HD/CSA/200-600 V 3-PH Machine System/STD EQUIPPED/FHT-EX®105TTM STD-NR Torch 49.2ft/M Starter Kit	49.2 ft	EX-4-013-015
PLASMA CUTTING UNITS		
EX-TRAFIRE® 85HD/CSA/200-600 V 3-PH power supply unit/FULLY EQUIPPED		EX-4-001-009
EX-TRAFIRE® 85HD/CSA/200-600 V 3-PH power supply unit/STD EQUIPPED		EX-4-003-005

NOTE:

STD (standard) EQUIPPED - CNC-Port
 FULLY EQUIPPED - CNC-Port & Serial Interface port (CAN bus)

AVAILABLE STARTER KITS

Information about available starter kits on the page 32

ACCESSORIES

Information about available accessories on the last pages of this catalog

EX-TRAFIRE® 85HD



FRONT VIEW



BACK VIEW



SIDE VIEW

EX-TRAFIRE® IO5HD

INDUSTRIAL CUTTING. HEAVY-DUTY PERFORMANCE.

SOLUTIONS / INDUSTRIES



Automotive
and transportation



Steel mills and
steel service
centers



Structural



Shipyards
and Offshore



Heavy
fabrication



THERMACUT
FHT-EX

EX-TRAFIRE 105HD

105 A

CE

THERMACUT

EX-TRAFIRE® 105HD



- CUTTING 105 A CURRENT**
- MATERIAL 2 inches THICKNESS**
- VARIOUS OPERATION MODES**

IMPRESSIVE PERFORMANCE



- + Industry leading high cutting speed
- + Maximum cutting quality, even with long cuts
- + Also ideal for automated processes

READY FOR INDUSTRY 4.0



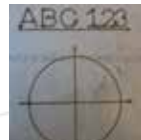
- + Industry leading connectivity
- + CAN / RS 485 / RS 422 Bus interface (optional)
- + Easy monitoring
- + Expandable and updatable

HIGHEST FLEXIBILITY



- + Plate thicknesses up to 2 inches
- + For mechanized and manual applications
- + Gouging with high removal rate
- + Suitable for worldwide use

MARKING MODE



- + Automatic gas identification (air, nitrogen, argon)
- + Integrated gas saving function
- + Fine, deep or wide markings
- + Optional smooth marking for applications below 20 A

AUTOMATIC SETTINGS



- + Cutting gas media, electricity and pilot current
- + Compensation for pressure drops
- + Fewer operating errors, better cutting quality

NEW CUTTING TORCH FHT® EX105TT



- + Torch design award winner
- + Optimized ergonomics
- + Relaxed PE and PA cutting
- + 100 % duty cycle

EX-TRAFIRE® 105HD

SPECIFICATIONS

Cutting current	20-105 A
Modes	cutting / grid cutting / gouging / marking
Duty cycle @ 104 °F	
U ₁ - 1 × 230 VAC	40 % @ 85 A , 100 % @ 54 A
U ₁ - 3 × 208 VAC	55 % @ 105 A , 100 % @ 77 A
U ₁ - 3 × 460-575 VAC	80 % @ 105 A , 100 % @ 94 A
Rated output voltage	160 VDC
Severance cutting capacity	2"
Piercing capacity *	1"
Gouging Removal	20 lbs/hr
Recommended cutting capacity *	1 3/8"
Plasma gas	air / nitrogen / argon**
Air flow cut pressure	75 PSI
CAN, RS 485, RS 422	optional
Preadjusted voltage divider ratio ***	50:1
Input voltage	1 × 200 - 240 VAC / 3 × 208-575 VAC ± 15%
Frequency	50/60 Hz
Dimensions (L × W × H)	24" × 20" × 12"
Weight	96 lbs
Certification depending on region	CSA
Recommended Min/Max Pressure	90-145 PSI
Protection level	IP23S
Insulation class	F
Type of hand torch	FHT-EX®105TTH
Type of machine torch	FHT-EX®105TTM

*values for low alloy steel, e. g. MS S235JR

**used for optional fine marking

***part of optional CNC interface

**** I₂ reduced to 65 A at single phase input voltage

4 DIFFERENT OPERATION MODES

The plasma cutting systems in the EX-TRAFIRE®HD range excel at meeting demanding requirements during continuous operation. The portable EX-TRAFIRE®105HD plasma cutting system is the perfect solution for challenging heavy-duty industrial applications.



EX-TRAFIRE® 105HD

ORDERING INFORMATION

Description	Length	Part No.
MANUAL PLASMA CUTTING SYSTEMS		
EX-TRAFIRE®105HD/CSA/200-600 V 3-PH Hand System/FHT-EX®105TTH Torch 16.4 ft/H Starter Kit	16.4 ft	EX-5-010-051
EX-TRAFIRE®105HD/CSA/200-600 V 3-PH Hand System/FHT-EX®105TTH Torch 26.2 ft/H Starter Kit	26.2 ft	EX-5-010-052
EX-TRAFIRE®105HD/CSA/200-600 V 3-PH Hand System/FHT-EX®105TTH Torch 49.2 ft/H Starter Kit	49.2 ft	EX-5-010-053
MECHANIZED PLASMA CUTTING SYSTEMS		
EX-TRAFIRE®105HD/CSA/200-600 V 3-PH Machine System/FULLY EQUIPPED/FHT-EX®105TTM STD-NR Torch 26.2 ft/M Starter Kit	26.2 ft	EX-5-011-036
EX-TRAFIRE®105HD/CSA/200-600 V 3-PH Machine System/FULLY EQUIPPED/FHT-EX®105TTM STD-NR Torch 49.2 ft/M Starter Kit	49.2 ft	EX-5-011-037
EX-TRAFIRE®105HD/CSA/200-600 V 3-PH Machine System/STD EQUIPPED/FHT-EX®105TTM STD-NR Torch 26.2 ft/M Starter Kit	26.2 ft	EX-5-013-014
EX-TRAFIRE®105HD/CSA/200-600 V 3-PH Machine System/STD EQUIPPED/FHT-EX®105TTM STD-NR Torch 49.2 ft/M Starter Kit	49.2 ft	EX-5-013-015
PLASMA CUTTING UNITS		
EX-TRAFIRE® 105HD/CSA/200-600 V 3-PH power supply unit/FULLY EQUIPPED		EX-5-001-005
EX-TRAFIRE® 105HD/CSA/200-600 V 3-PH power supply unit/STD EQUIPPED		EX-5-003-005

NOTE:

STD (standard) EQUIPPED - CNC-Port
FULLY EQUIPPED - CNC-Port & Serial Interface

AVAILABLE STARTER KITS

Information about available starter kits on the page 32

ACCESSORIES

Information about available accessories on the last pages of this catalog

EX-TRAFIRE® 105HD



FRONT VIEW



BACK VIEW



SIDE VIEW

FHT-EX® 105TT

HAND / MACHINE TORCHES AND CONSUMABLES

SUITABLE FOR EX-TRAFIRE® 85HD/105HD





FHT-EX® 105TT



The high-performing FHT-EX®105TT H/M hand and machine torches meet the tough demands of continuous operations. Designed for optimal use with 105HD power supply for cutting, gouging, grid-cutting and marking, while allowing cut thickness up to 2 inches with greater precision and speed.

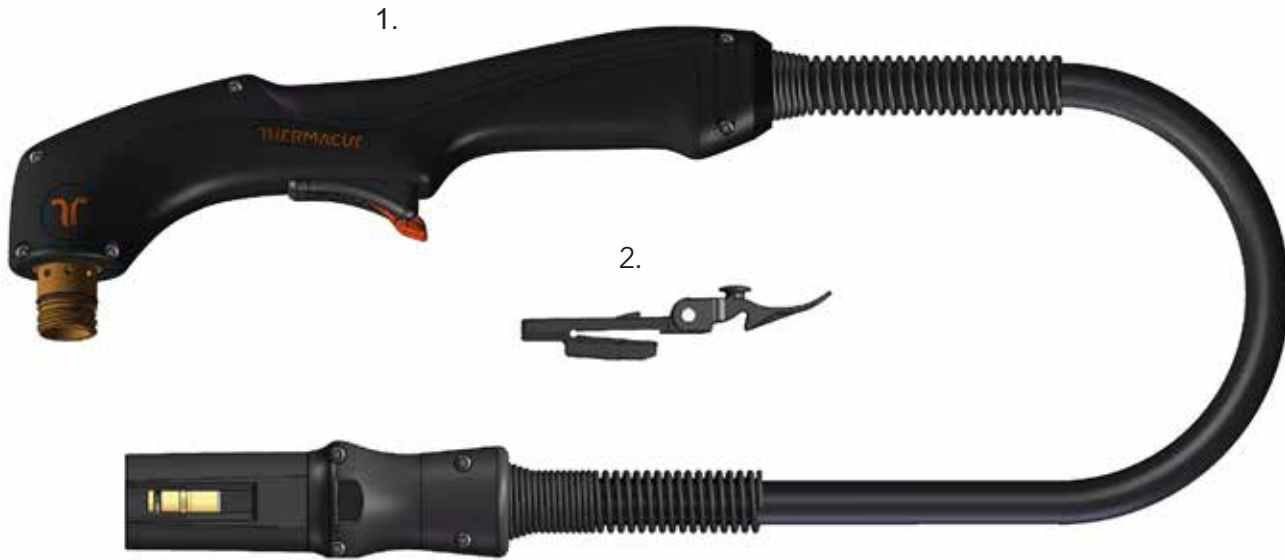
With the THERMACUT® Torch Connection System (TCS), changing the torch is a quick and easy process. Resulting from decades of experience in the field of plasma cutting, the power supplies features an extremely robust and durable design supported by consumables that can be replaced quick and easily.

BENEFITS

- High-performant torches for mechanised applications and handheld use
- Ergonomic handheld torches for safe and reliable holding and guiding in all positions
- Compact and flexible for handheld applications, even in the case of tight radii or gouging of fillet welds
- 100 % duty cycle at 94 A for continuous use
- Capable of plate thicknesses up to 2 inches
- Consumables with an extended lifetime
- Quick and tool-free replacement of consumables
- Piercing capability up to 1 inch

FHT-EX® 105TTH

HAND TORCH ASSEMBLY



Item	Part No.	Description	Pcs
1.	EX-5-139-001	FHT-EX®105TTH Hand Torch Assembly-w/o consumables w/5 m (16.5') Lead/TCS13	1
	EX-5-139-002	FHT-EX®105TTH Hand Torch Assembly w/o consumables w/8 m (26') Lead/TCS13	1
	EX-5-139-003	FHT-EX®105TTH Hand Torch Assembly w/o consumables w/15 m (50') Lead/TCS13	1
	EX-5-139-004	FHT-EX®105TTH Hand Torch Assembly w/o consumables w/23 m (75') Lead/TCS13	1
a	2.	EX-0-321-003 Latch with Key Assembly	1

a LATCH WITH KEY IS NOT CONTENT OF TORCHES ABOVE. IF YOU NEED IT, YOU HAVE TO ORDER SEPARATELY.

FHT-EX® 105TTH

HAND TORCH COMPONENTS

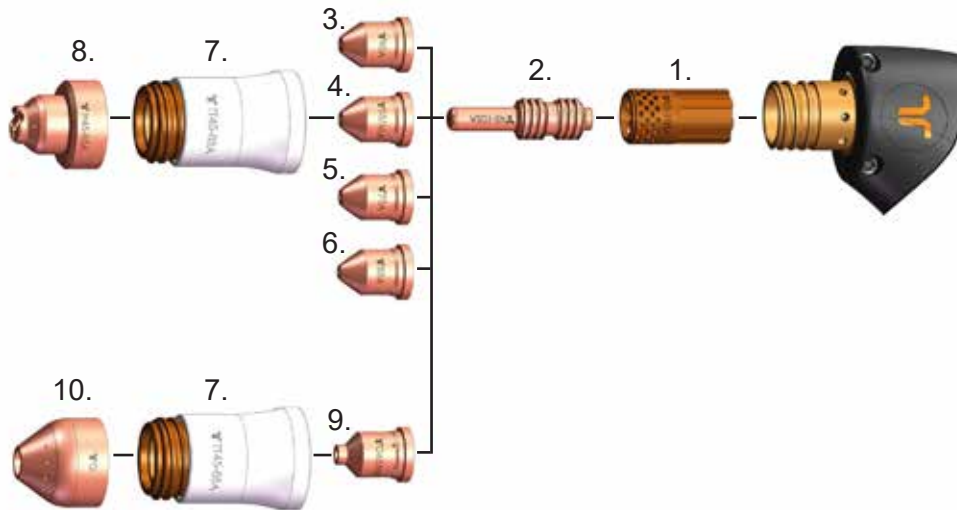


Item	Part No.	Description	Pcs	Item	Part No.	Description	Pcs
1.	EX-5-374-010	FHT-EX®105TTH Hand Torch Lead Replacement 5m (16.5')/TCS13	1	9.	EX-0-323-001	TCS13 Plug Body	1
1.	EX-5-374-011	FHT-EX®105TTH Hand Torch Lead Replacement 8m (26')/TCS13	1	10.	EX-5-302-001	Hand Torch Body Repl. Kit (incl. Torch body & Cap sensor)	1
1.	EX-5-374-012	FHT-EX®105TTH Hand Torch Lead Replacement 15m (50')/TCS13	1	11.	EX-5-431-050	O-Ring (fitted on the torch body) - 2 pcs	2
1.	EX-5-374-013	FHT-EX®105TTH Hand Torch Lead Replacement 23m (75')/TCS13	1	12.	EX-5-314-001	Hand Torch Handle Replacement Kit	1
2.	EX-5-318-001	TCS Plug Spring Strain Relief	1	13.	EX-5-305-002	Cap-sensor Replacement Kit with Screws/ Hand Torch	1
3.	EX-0-325-015	TCS Clam Shell Screw Kit (incl. 4 screws)	1	14.	EX-5-313-031	Safety Trigger	1
4.	EX-0-325-002	TCS Clam Shell Upper	1	15.	EX-5-308-001	Hand Torch Handle with Screws	1
5.	EX-0-325-001	TCS Clam Shell Lower	1	16.	EX-5-372-010	Cathode mounting kit	1
6.	EX-0-325-010	Retaining Ring (Outer circlip ring)	1	17.	EX-0-321-003	Latch w/Key Assembly	1
7.	EX-0-325-009	O-Ring (fitted in the TCS plug)	1	a 18.	EX-5-313-030	Safety Trigger Micro-Switch	1
8.	EX-0-325-005	Male Crimp Pin for TCS Plug	1				

a LATCH WITH KEY IS NOT CONTENT OF TORCHES ABOVE. IF YOU NEED IT, YOU HAVE TO ORDER SEPARATELY.

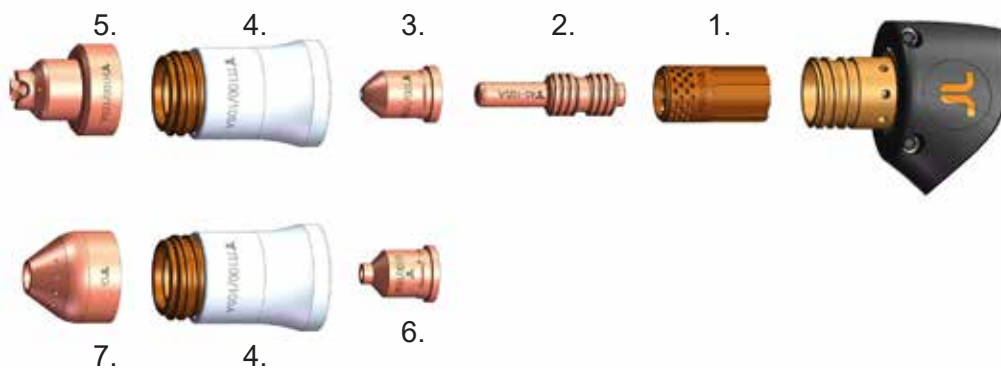
CONSUMABLES

HAND TORCH CONSUMABLES - 45-85 A



Item	Part No.	Description	Pcs	Item	Part No.	Description	Pcs
1.	EX-5-404-051	Swirl Ring 45-105 A	1	6.	EX-5-410-055	Nozzle 85 A	5
2.	EX-5-401-051	Electrode 45-105 A	5	7.	EX-5-415-050	Nozzle Retaining Cap 45-85 A	1
3.	EX-5-410-051	Nozzle 45 A	5	8.	EX-5-422-031	Hand Shield 45-85 A	1
4.	EX-5-410-053	Nozzle 55/65 A	5	9.	EX-5-440-051	Gouging Nozzle 65-85 A	5
5.	EX-5-410-030	Nozzle 75 A	5	10.	EX-5-440-050	Gouging Shield	1

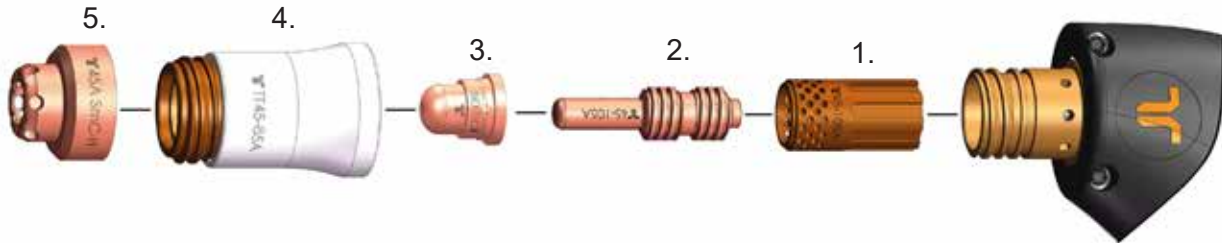
HAND TORCH CONSUMABLES - 100-105 A



Item	Part No.	Description	Pcs	Item	Part No.	Description	Pcs
1.	EX-5-404-051	Swirl Ring 45-105 A	1	5.	EX-5-422-032	Hand Shield 100/105 A	1
2.	EX-5-401-051	Electrode 45-105 A	5	6.	EX-5-440-052	Gouging Nozzle 100/105 A	5
3.	EX-5-410-056	Nozzle 100/105 A	5	7.	EX-5-440-050	Gouging Shield	1
4.	EX-5-415-051	Nozzle Retaining Cap 100/105 A	1				

CONSUMABLES

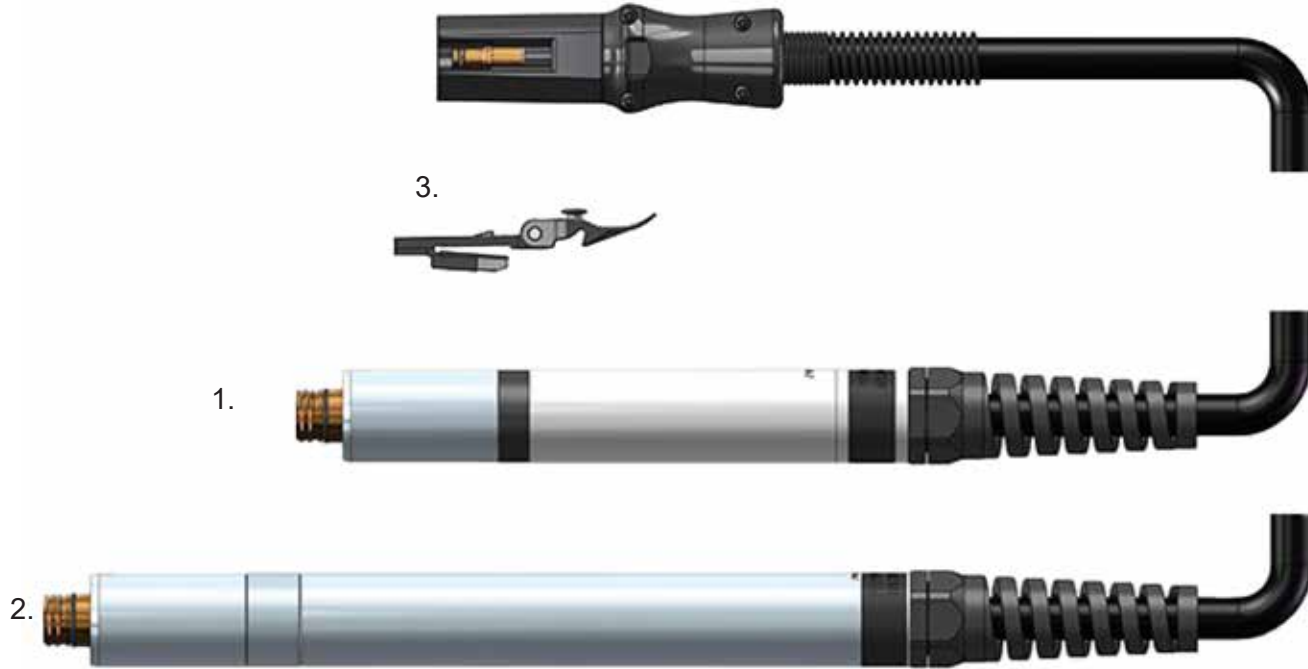
HAND TORCH CONSUMABLES - SMOOTHLINE



Item	Part No.	Description	Pcs
1.	EX-5-404-051	Swirl Ring 45-105 A	1
2.	EX-5-401-051	Electrode 45-105 A	5
3.	EX-5-410-050	Nozzle Smoothline	5
4.	EX-5-415-050	Nozzle Retaining Cap 45-85 A	1
5.	EX-5-420-050	Hand Shield 40/45 A Smoothline	1

FHT-EX® 105TTM

MACHINE TORCH ASSEMBLY

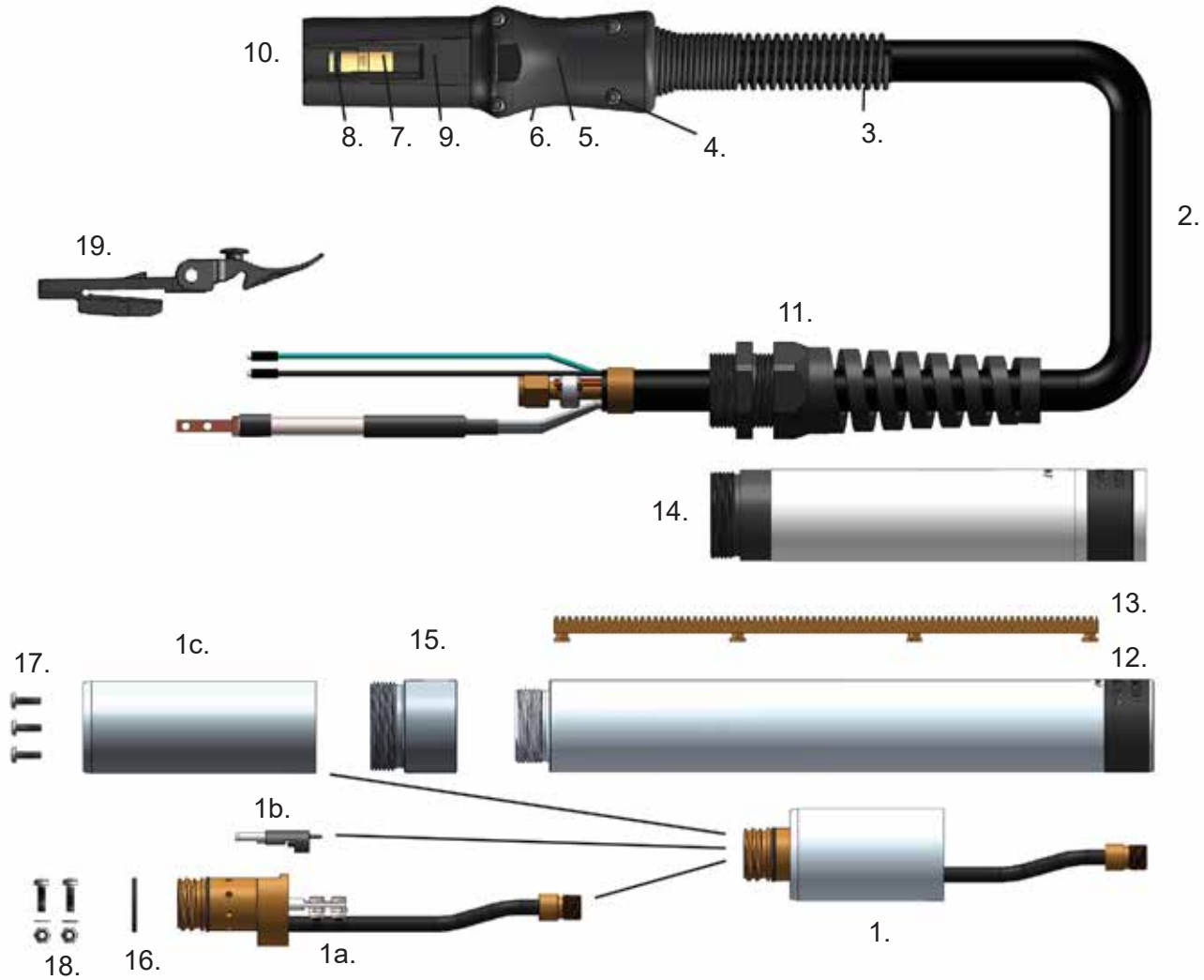


Item	Part No.	Description	Pcs
NS	EX-5-234-021	DEMO FHT-EX®105TTSM Short Machine Torch Assembly/ TCS13	1
1.	EX-5-242-021	FHT-EX®105TTSM Short Machine Torch Assembly-w/o consumables w/5 m (16.5') Lead/ TCS13	1
1.	EX-5-244-021	FHT-EX®105TTSM Short Machine Torch Assembly-w/o consumables w/8 m (26') Lead/ TCS13	1
1.	EX-5-247-021	FHT-EX®105TTSM Short Machine Torch Assembly-w/o consumables w/15 m (50') Lead/ TCS13	1
1.	EX-5-250-021	FHT-EX®105TTSM Short Machine Torch Assembly-w/o consumables w/23 m (75') Lead/ TCS13	1
2.	EX-5-202-031	FHT-EX®105TTM M Torch w/o Rack Assy w/o consumables w/5 m (16.5')Lead/ TCS13	1
2.	EX-5-204-031	FHT-EX®105TTM M Torch w/o Rack Assy w/o consumables w/8 m (26') Lead/ TCS13	1
2.	EX-5-207-032	FHT-EX®105TTM M Torch w/o Rack Assy w/o consumables w/15 m (50') Lead/ TCS13	1
2	EX-5-210-034	FHT-EX®105TTM M Torch w/o Rack Assy w/o consumables w/23 m (75') Lead/ TCS13	1
a 2.	EX-0-321-003	Latch with Key Assembly	1

a LATCH WITH KEY IS NOT CONTENT OF TORCHES ABOVE. IF YOU NEED IT, YOU HAVE TO ORDER SEPARATELY.

FHT-EX® 105TTM

MACHINE TORCH COMPONENTS

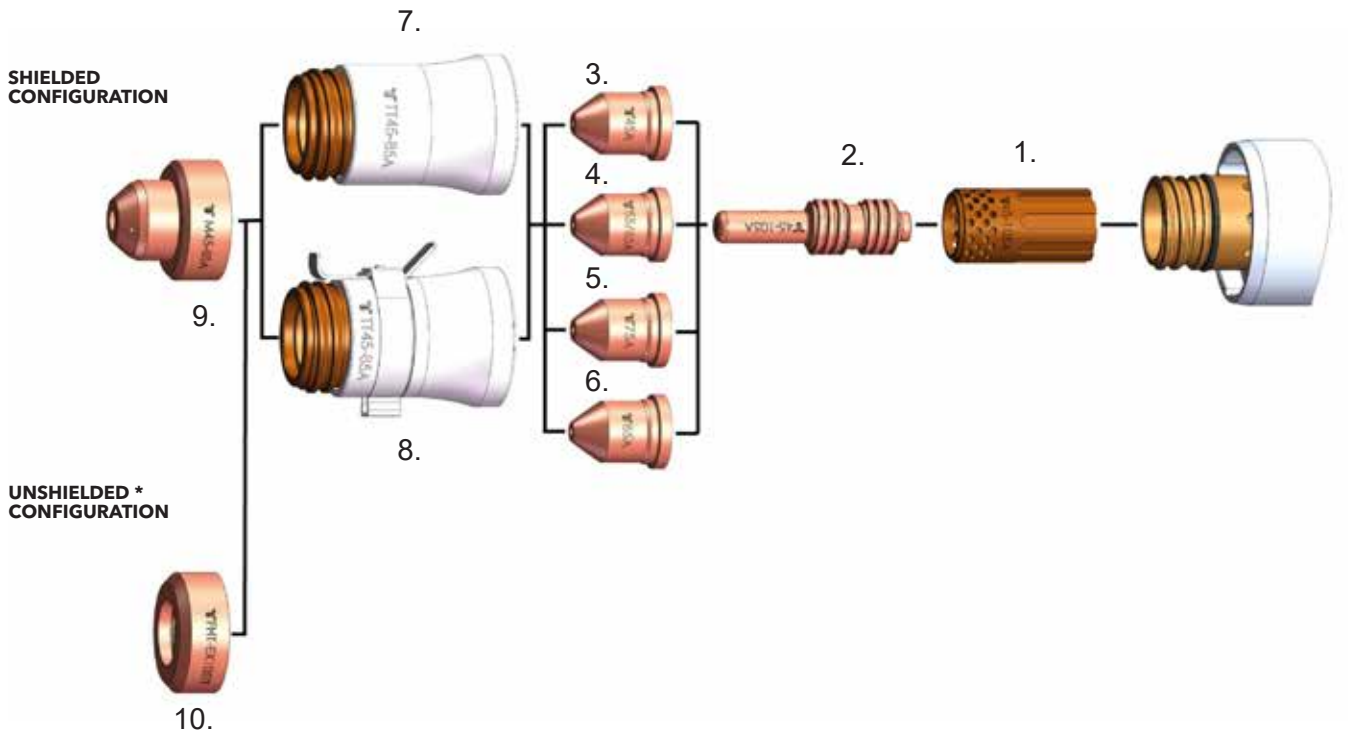


Item	Part No.	Description	Pcs	Item	Part No.	Description	Pcs
1.	EX-5-303-011	Machine Torch Body Assembly FHT-EX®105TTM	1	8.	EX-0-325-009	O-Ring (fitted in the TCS plug)	1
1a.	EX-5-303-010	Machine Torch Body FHT-EX®105TTM	1	9.	EX-0-325-005	Male Crimp Pin for TCS Plug	1
1b.	EX-5-304-001	Cap Sensor Replacement Kit with Screws/Machine Torch	1	10.	EX-0-323-001	TCS13 Plug Body	1
1c.	EX-5-306-002	Torch Mounting Sleeve (incl. 3 screws)	1	11.	EX-5-317-021	Machine Torch Strain Relief	1
2.	EX-5-375-010	FHT-EX®105TTM Machine Torch Lead Replacement 5 m (16.5')/TCS13	1	12.	EX-5-306-003	Standard Mounting Tube w/o Rack	1
2.	EX-5-375-011	FHT-EX®105TTM Machine Torch Lead Replacement 8 m (26')/TCS13	1	13.	EX-5-306-004	Gear Rack	1
2.	EX-5-375-012	FHT-EX®105TTM Machine Torch Lead Replacement 15 m (50')/TCS13	1	14.	EX-5-306-009	Short Mounting Tube	1
2.	EX-5-375-013	FHT-EX®105TTM Machine Torch Lead Replacement 23 m (75')/TCS13	1	15.	EX-5-306-005	Standard Mounting Tube Reduction Nut	1
3.	EX-5-318-001	TCS Plug Spring Strain Relief	1	16.	EX-5-431-050	O-Ring (fitted on the torch body)	1
4.	EX-0-325-015	TCS Clam Shell Screw Kit (incl. 4 screws)	1	17.	EX-5-372-005	Torch Mounting Screws Kit (incl. 3 screws)	1
5.	EX-0-325-002	TCS Clam Shell Upper	1	18.	EX-5-372-010	Cathode Mounting Kit	1
6.	EX-0-325-001	TCS Clam Shell Lower	1	a 19.	EX-0-321-003	Latch w/Key Assembly	1
7.	EX-0-325-010	Retaining Ring (Outer circlip ring)	1				

a LATCH WITH KEY IS NOT CONTENT OF TORCHES ABOVE. IF YOU NEED IT, YOU HAVE TO ORDER SEPARATELY.

CONSUMABLES

STANDARD MACHINE TORCH CONSUMABLES - 45-85 A

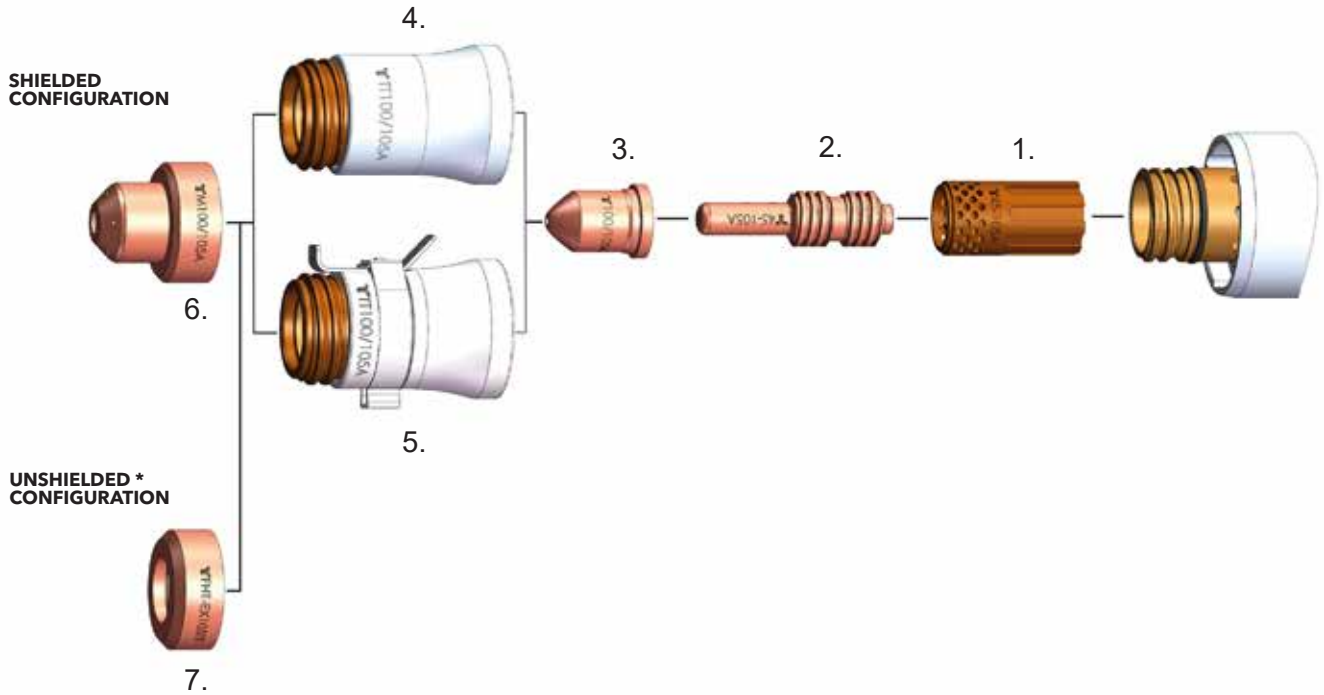


Item	Part No.	Description	Pcs	Item	Part No.	Description	Pcs
1.	EX-5-404-051	Swirl Ring 45-105 A	1	6.	EX-5-410-055	Nozzle 85 A	5
2.	EX-5-401-051	Electrode 45-105 A	5	7.	EX-5-415-050	Nozzle Retaining Cap 45-85 A	1
3.	EX-5-410-051	Nozzle 45 A	5	8.	EX-5-415-052	Nozzle Retaining Cap 45-85 A w/IHS Tab	1
4.	EX-5-410-053	Nozzle 55/65 A	5	9.	EX-5-422-051	Machine Shield 45-85 A	1
5.	EX-5-410-030	Nozzle 75 A	5	10.	EX-5-423-001	Deflector	1

* IN COUNTRIES FOLLOWING CE STANDARDS, UNSHIELDED CONSUMABLE CONFIGURATION MAY ONLY BE USED IN MECHANIZED TORCH APPLICATIONS.

CONSUMABLES

MACHINE TORCH CONSUMABLES - 100-105 A

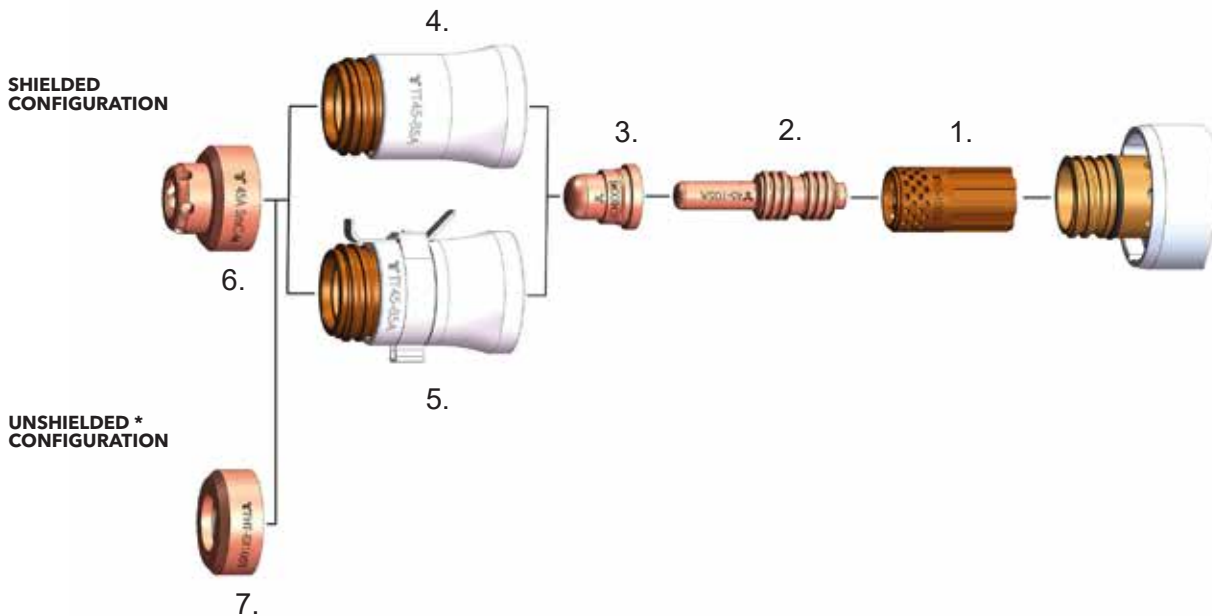


Item	Part No.	Description	Pcs
1.	EX-5-404-051	Swirl Ring 45-105 A	1
2.	EX-5-401-051	Electrode 45-105 A	5
3.	EX-5-410-056	Nozzle 100/105 A	5
4.	EX-5-415-051	Nozzle Retaining Cap 100/105 A	1
5.	EX-5-415-053	Nozzle Retaining Cap 100/105 A w/IHS Tab	1
6.	EX-5-422-052	Machine Shield 100/105 A	1
7.	EX-5-423-001	Deflector	1

* IN COUNTRIES FOLLOWING CE STANDARDS, UNSHIELDED CONSUMABLE CONFIGURATION MAY ONLY BE USED IN MECHANIZED TORCH APPLICATIONS.

CONSUMABLES

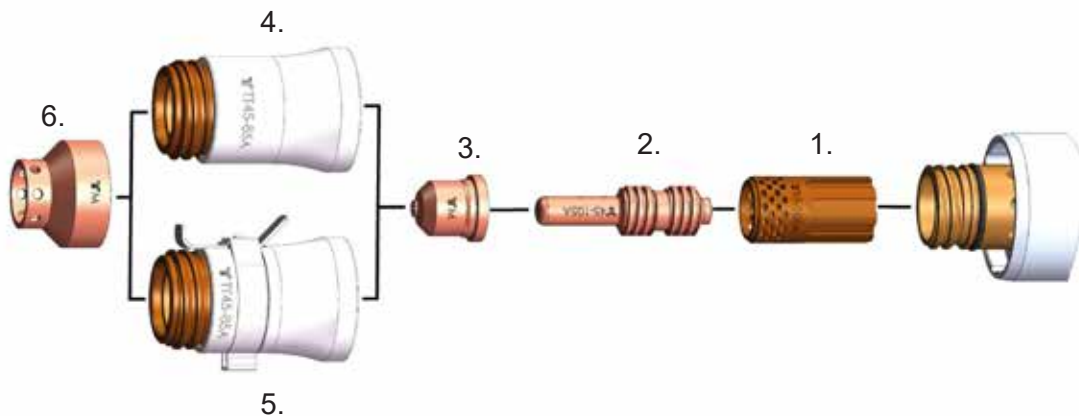
MACHINE TORCH CONSUMABLES - SMOOTHLINE



Item	Part No.	Description	Pcs	Item	Part No.	Description	Pcs
1.	EX-5-404-051	Swirl Ring 45-105 A	1	5.	EX-5-415-052	Nozzle Retaining Cap 45-85 A w/IHS Tab	1
2.	EX-5-401-051	Electrode 45-105 A	5	6.	EX-5-422-050	Machine Shield 40/45 A Smoothline	1
3.	EX-5-410-050	Nozzle Smoothline	5	7.	EX-5-423-001	Deflector	1
4.	EX-5-415-050	Nozzle Retaining Cap 45-85 A	1				

* IN COUNTRIES FOLLOWING CE STANDARDS, UNSHIELDED CONSUMABLE CONFIGURATION MAY ONLY BE USED IN MECHANIZED TORCH APPLICATIONS.

MACHINE TORCH CONSUMABLES - MARKING



Item	Part No.	Description	Pcs	Item	Part No.	Description	Pcs
1.	EX-5-404-051	Swirl Ring 45-105A	1	4.	EX-5-415-050	Nozzle Retaining Cap 45-85A	1
2.	EX-5-401-051	Electrode 45-105 A	5	5.	EX-5-415-052	Nozzle Retaining Cap 45-85A w/IHS Tab	1
3.	EX-5-445-001	Marking Nozzle	5	6.	EX-5-445-002	Marking Shield	1

CONSUMABLES

AVAILABLE STARTER KIT



CONTENTS OF THE PACKAGE

- 4 pcs of electrodes
- 4 pcs of nozzles
- 4 pcs of Hand/Machine shields
- 1 pc of swirl ring
- 1 pc of torch body O-ring

Part No.	Description	Std. package QTY
EX-5-432-051	Starter Kit 55/65A for Hand Torch FHT-EX®105TTH	1
EX-5-432-052	Starter Kit 75A for Hand Torch FHT-EX®105TTH	1
EX-5-432-053	Starter Kit 85A for Hand Torch FHT-EX®105TTH	1
EX-5-432-054	Starter Kit 100/105A for Hand Torch FHT-EX®105TTH	1
EX-5-433-050	Starter Kit 55A for Machine Torch FHT-EX®105TTM	1
EX-5-433-051	Starter Kit 55/65A for Machine Torch FHT-EX®105TTM	1
EX-5-433-052	Starter Kit 75A for Machine Torch FHT-EX®105TTM	1
EX-5-433-053	Starter Kit 85A for Machine Torch FHT-EX®105TTM	1
EX-5-433-054	Starter Kit 100/105A for Machine Torch FHT-EX®105TTM	1
EX-5-432-055	Starter Kit 45A for Hand Torch FHT-EX®105TTH	1
EX-5-433-055	Starter Kit 45A for Machine Torch FHT-EX®105TTM	1

CONSUMABLES

EX-TRAFIRE® I25HD

INDUSTRIAL CUTTING. HEAVY-DUTY PERFORMANCE.

SOLUTIONS / INDUSTRIES



Heavy Fabrication



Steel mills and steel service centers



Structural



Shipyards and Offshore



Heavy fabrication



EX-TRAFIRE 125HD

125 A

ASDAK

THERMAC



EX-TRAFIRE 125HD

EX-TRAFIRE® 125HD



CUTTING
125 A
CURRENT

MATERIAL
2 1/2 inches
THICKNESS

DUTY
CYCLE
100 %

IMPRESSIVE PERFORMANCE



- + Industry leading high cutting speed
- + Maximum cutting quality, even with long cuts
- + Also ideal for automated processes

READY FOR INDUSTRY 4.0



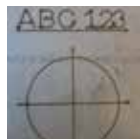
- + Industry leading connectivity
- + CAN / RS 485 / RS 422 interface (optional)
- + Easy monitoring
- + Expandable and updatable

HIGHEST FLEXIBILITY



- + Plate thicknesses up to 2 1/2 inches
- + For mechanized and manual applications
- + Gouging with high removal rate
- + Suitable for worldwide use

MARKING MODE



- + Automatic gas identification (air, nitrogen, argon)
- + Integrated gas saving function
- + Fine, deep or wide markings
- + Optional smooth marking for applications below 20 A

AUTOMATIC SETTINGS



- + Automated settings for cutting parameters
- + Compensation for pressure drops
- + Fewer operating errors, better cutting quality

NEW CUTTING TORCH FHT® EX125TT



- + Torch design award BigSEE 2021 winner
- + Optimized ergonomics
- + Relaxed PE and PA cutting
- + 100 % duty cycle

EX-TRAFIRE® 125HD

SPECIFICATIONS

Cutting current	30-125 A
Modes	cutting / grid cutting / gouging / marking
Duty cycle @ 104 °F	100 % @ 125 A
Rated output voltage	180 V DC
Severance cutting capacity *	2 ½"
Piercing capacity *	1"
Gouging Removal	17.6 lbs/hr
Recommended cutting capacity *	1 ½"
Plasma gas	air / nitrogen / argon**
Air flow cut pressure	75 PSI
CAN, RS 485, RS 422)	optional
Preadjusted voltage divider ratio ***	50:1
Input voltage	3 × 480 V AC or 3 × 575 V AC ± 15%
Frequency	50/60 Hz
Dimensions (L × W × H)	24" × 21" × 12"
Weight	75 lbs
Certification depending on region	CSA
Recommended Min/Max Pressure	90-145 PSI
Protection level	IP23S
Insulation class	F
Type of hand torch	FHT-EX®125TTH
Type of machine torch	FHT-EX®125TTM

*values for low alloy steel, e. g. MS S235JR

**used for optional fine marking

***part of optional CNC interface

**** I₂ reduced to 65 A at single phase input voltage

4 DIFFERENT OPERATION MODES

The plasma cutting systems in the EX-TRAFIRE®HD range excel at meeting demanding requirements during continuous operation. The powerful EX-TRAFIRE® 125HD plasma cutting system, with a 100% duty cycle, is the perfect solution for challenging heavy-duty industrial applications.



EX-TRAFIRE® 125HD

ORDERING INFORMATION

Description	Length	Part No.
MANUAL PLASMA CUTTING SYSTEMS		
EX-TRAFIRE®125HD/CSA/3 × 440-480 V Hand System/FHT-EX®125TTH Torch 26.2 ft/H Starter Kit	26.2 ft	EX-6-010-007
EX-TRAFIRE®125HD/CSA/3 × 380 V Hand System/FHT-EX®125TTH Torch 26.2 ft/H Starter Kit	26.2 ft	EX-6-010-009
EX-TRAFIRE®125HD/CSA/3 × 380 V Hand System/FHT-EX®125TTH Torch 49.2 ft /H Starter Kit	49.2 ft	EX-6-010-010
EX-TRAFIRE®125HD/CSA/3 × 575/600 V Hand System/FHT-EX®125TTH Torch 26.2 ft/H Starter Kit	26.2 ft	EX-6-010-011
EX-TRAFIRE®125HD/CSA/3 × 575/600 V Hand System/FHT-EX®125TTH Torch 49.2 ft /H Starter Kit	49.2 ft	EX-6-010-012
EX-TRAFIRE®125HD/CSA/3 × 440-480 V Hand System/FHT-EX®125TTH Torch 49.2 ft /H Starter Kit	49.2 ft	EX-6-010-008
MECHANIZED PLASMA CUTTING SYSTEMS		
EX-TRAFIRE®125HD/CSA/3 × 440-480 V Machine System/FULLY EQUIPPED/FHT-EX®125TTM Torch 26.2 ft/H Starter Kit	26.2 ft	EX-6-011-007
EX-TRAFIRE®125HD/CSA/3 × 440-480 V Machine System/FULLY EQUIPPED/FHT-EX®125TTM Torch 49.2 ft/H Starter Kit	49.2 ft	EX-6-011-008
EX-TRAFIRE®125HD/CSA/3 × 440-480 V Machine System/STD EQUIPPED/FHT-EX®125TTM Torch 26.2 ft/H Starter Kit	26.2 ft	EX-6-013-001
EX-TRAFIRE®125HD/CSA/3 × 440-480 V Machine System/STD EQUIPPED/FHT-EX®125TTM Torch 49.2 ft/H Starter Kit	49.2 ft	EX-6-013-002
EX-TRAFIRE®125HD/CSA/3 × 575/600 V Machine System/FULLY EQUIPPED/FHT-EX®125TTM Torch 26.2 ft/H Starter Kit	26.2 ft	EX-6-011-011
EX-TRAFIRE®125HD/CSA/3 × 575/600V Machine System/FULLY EQUIPPED/FHT-EX®125TTM Torch 49.2 ft/H Starter Kit	49.2 ft	EX-6-011-012
EX-TRAFIRE®125HD/CSA/3 × 575/600 V Machine System/STD EQUIPPED/FHT-EX®125TTM Torch 26.2 ft/H Starter Kit	26.2 ft	EX-6-013-003
EX-TRAFIRE®125HD/CSA/3 × 575/600 V Machine System/STD EQUIPPED/FHT-EX®125TTM Torch 49.2 ft/H Starter Kit	49.2 ft	EX-6-013-004
EX-TRAFIRE®125HD/CSA/3 × 380 V Machine System/STD EQUIPPED/FHT-EX®125TTM Torch 26.2 ft/H Starter Kit	26.2 ft	EX-6-011-009
EX-TRAFIRE®125HD/CSA/3 × 380 V Machine System/STD EQUIPPED/FHT-EX®125TTM Torch 49.2 ft/H Starter Kit	49.2 ft	EX-6-011-010

NOTE:

STD (standard) EQUIPPED - CNC-Port
FULLY EQUIPPED - CNC-Port & Serial Interface

AVAILABLE STARTER KITS

Information about available starter kits on the page 52

ACCESSORIES

Information about available accessories on the last pages of this catalog

EX-TRAFIRE® 125HD



FRONT VIEW



BACK VIEW



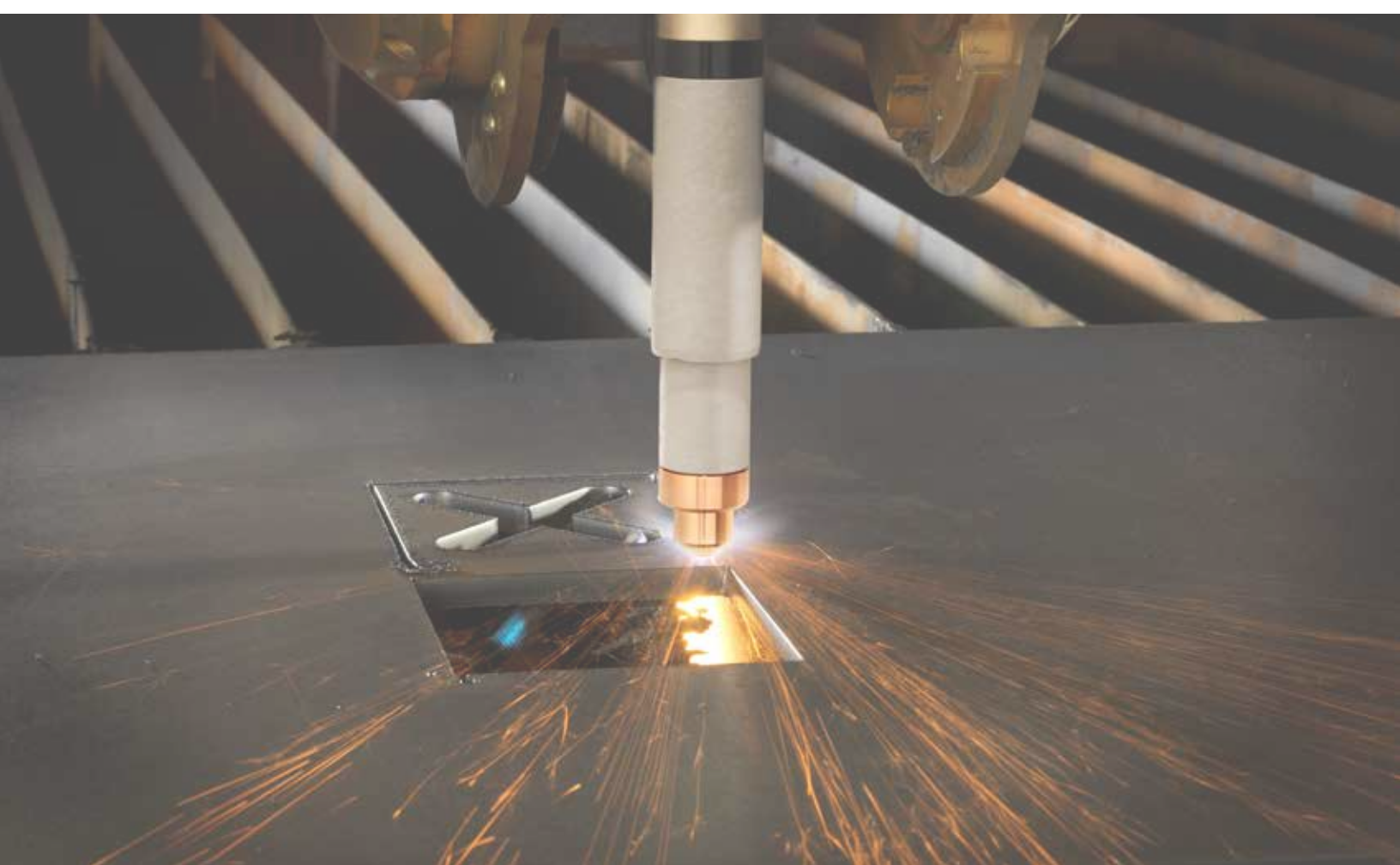
SIDE VIEW

FHT-EX® 125TT

HAND / MACHINE TORCHES AND CONSUMABLES

SUITABLE FOR EX-TRAFIRE® 125HD





FHT-EX® 125TT



The high-performing FHT-EX® 125TT H/M hand and machine torches meet the tough demands of continuous operations. These torches are optimally designed for use with EX-TRAFIRE® 125HD power supplies and are suitable for cutting, gouging, grid-cutting and marking, while allowing cut thickness up to 2-1/2" with greater precision and speed.

The THERMACUT® Torch Connection System (TCS), changing the torch is a quick and easy process. The powerful torches are the result of decades of experience in the field of plasma cutting. They feature an extremely robust and durable design in which all consumables can be replaced quickly and easily.

BENEFITS

- High-performance torches for mechanized applications and handheld use
- Ergonomic handheld torches that increase time cutting safely in all positions
- Compact and flexible for handheld applications, even with a tight radius or the gouging of fillet welds
- 100 % duty cycle at 125 A, ideal for continuous use
- Capable of plate thicknesses up to 2-1/2"
- Consumables with an extended lifetime
- Quick and tool-free replacement of consumables
- Piercing capabilities up to 1"

FHT-EX® 125TTH

HAND TORCH ASSEMBLY

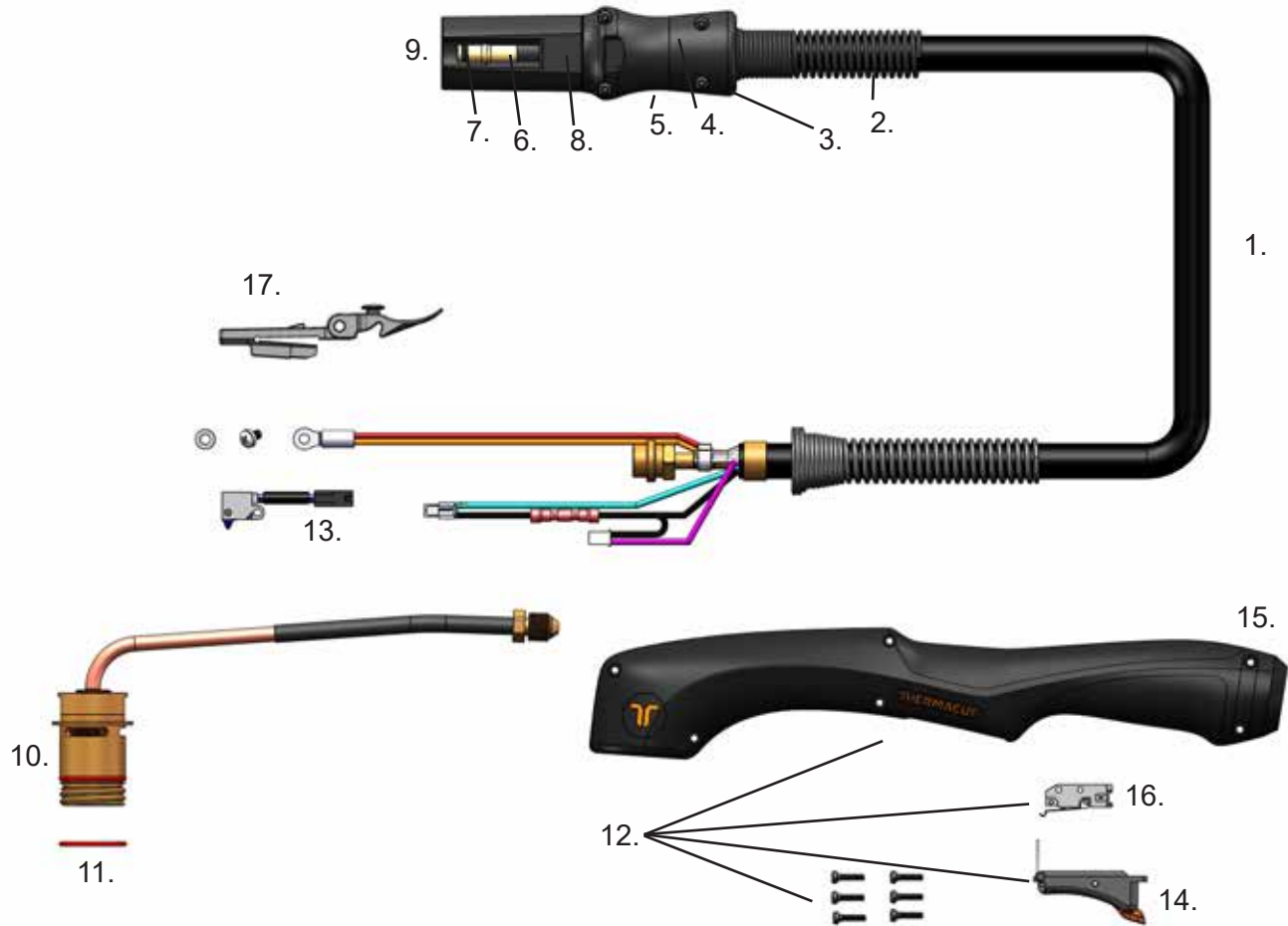


Item	Part No.	Description	Pcs
1.	EX-6-139-001	FHT-EX®125TTH Hand Torch Assembly-w/o consumables w/5 m (16.5')Lead/TCS13	1
1.	EX-6-139-002	FHT-EX®125TTH Hand Torch Assembly-w/o consumables w/8 m (26.2') Lead/TCS13	1
1.	EX-6-139-003	FHT-EX®125TTH Hand Torch Assembly-w/o consumables w/15 m (49.2') Lead/TCS13	1
1.	EX-6-139-004	FHT-EX®125TTH Hand Torch Assembly-w/o consumables w/23 m (75.5') Lead/TCS13	1
a	2.	EX-0-321-003 Latch with Key Assembly	1

a LATCH WITH KEY IS NOT CONTENT OF TORCHES ABOVE. IF YOU NEED IT, YOU HAVE TO ORDER SEPARATELY.

FHT-EX® 125TTH

HAND TORCH COMPONENTS

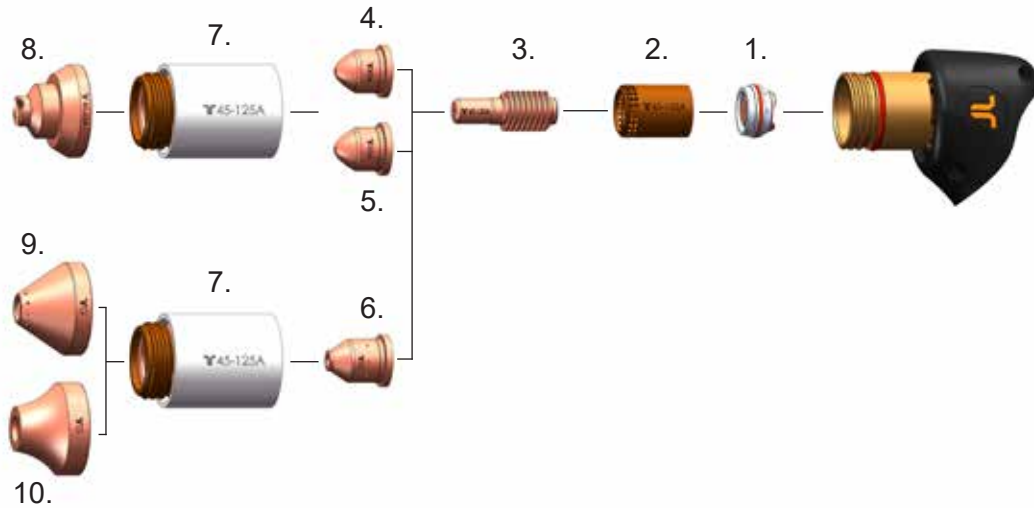


Item	Part No.	Description	Pcs	Item	Part No.	Description	Pcs
1.	EX-6-374-001	FHT-EX®125TTH Hand Torch Lead Replacement 5 m (16.5')/TCS13	1	8.	EX-0-325-005	Male Crimp Pin for TCS Plug	1
1.	EX-6-374-002	FHT-EX®125TTH Hand Torch Lead Replacement 8 m (26.2')/TCS13	1	9.	EX-0-323-001	TCS13 Plug Body	1
1.	EX-6-374-003	FHT-EX®125TTH Hand Torch Lead Replacement 15 m (49.2')/TCS13	1	10.	EX-6-302-001	Hand Torch Body	1
1.	EX-6-374-004	FHT-EX®125TTH Hand Torch Lead Replacement 23 m (75')/TCS13	1	11.	EX-6-431-001	O-Ring (fitted on the torch body) - 2 pcs	1
2.	EX-5-318-001	TCS Plug Spring Strain Relief	1	12.	EX-6-314-001	Hand Torch Handle Replacement Kit	1
3.	EX-0-325-015	TCS Clam Shell Screw Kit (incl. 4 screws)	1	13.	EX-5-305-001	Cap-sensor Replacement Kit with Screws/ Hand Torch	1
4.	EX-0-325-002	TCS Clam Shell Upper	1	14.	EX-5-313-031	Safety Trigger	1
5.	EX-0-325-001	TCS Clam Shell Lower	1	15.	EX-6-308-001	Hand Torch Handle with Screws (6pcs)	1
6.	EX-0-325-010	Retaining Ring (Outer circlip ring)	1	16.	EX-5-313-030	Safety Trigger Micro-Switch	1
7.	EX-0-325-009	O-Ring (fitted in the TCS plug)	1	a 17.	EX-0-321-003	Latch w/Key Assembly	1

a LATCH WITH KEY IS NOT CONTENT OF TORCHES ABOVE. IF YOU NEED IT, YOU HAVE TO ORDER SEPARATELY.

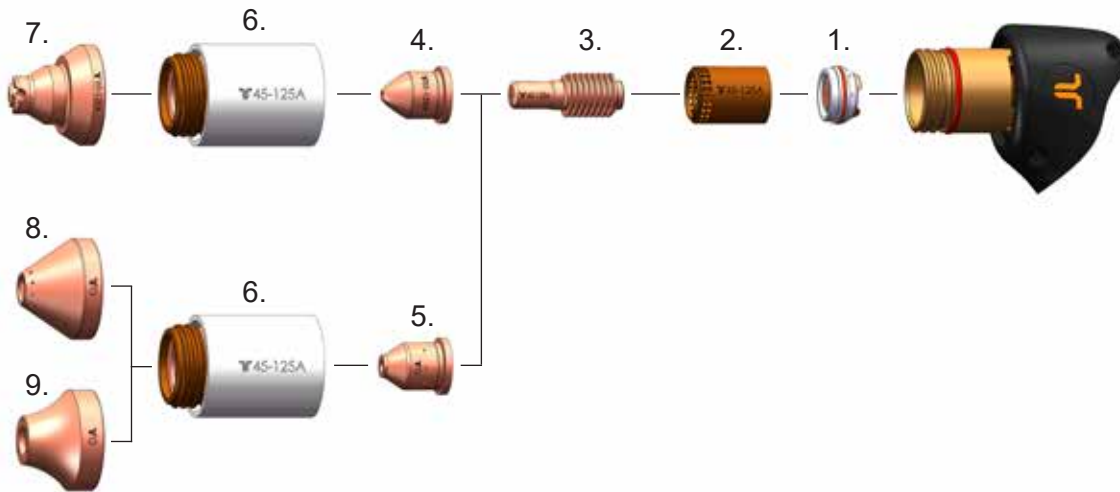
CONSUMABLES

HAND TORCH CONSUMABLES - 45-65 A



Item	Part No.	Description	Pcs	Item	Part No.	Description	Pcs
1.	EX-6-446-001	Swirl Ring Holder	1	6.	EX-6-440-020	Gouging Nozzle	1
2.	EX-6-404-021	Swirl Ring 45-125 A	1	7.	EX-6-415-021	Retaining Cap 45-125 A	1
3.	EX-6-401-021	Electrode 45-125 A (5 pcs package)	1	8.	EX-6-419-022	Shield 45-65 A, Hand	1
4.	EX-6-409-024	Nozzle 45 A	1	9.	EX-6-440-023	Gouging Shield, Standard	1
5.	EX-6-409-023	Nozzle 65 A	1	10.	EX-6-440-024	Gouging Shield, High Removal	1

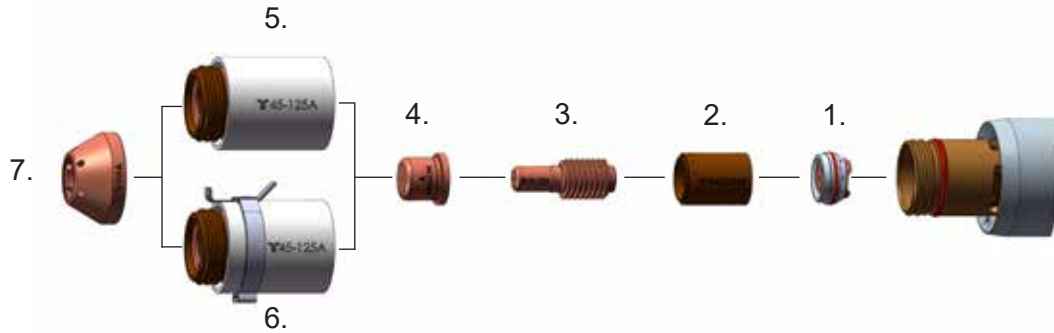
HAND TORCH CONSUMABLES - 85-125 A



Item	Part No.	Description	Pcs	Item	Part No.	Description	Pcs
1.	EX-6-446-001	Swirl Ring Holder	1	6.	EX-6-415-021	Retaining Cap 45-125 A	1
2.	EX-6-404-021	Swirl Ring 45-125 A	1	7.	EX-6-419-021	Shield 85-125 A, Hand	1
3.	EX-6-401-021	Electrode 45-125 A (5 pcs package)	1	8.	EX-6-440-023	Gouging Shield, Standard	1
4.	EX-6-409-021	Nozzle 85-125 A	1	9.	EX-6-440-024	Gouging Shield, High Removal	1
5.	EX-6-440-020	Gouging Nozzle	1				

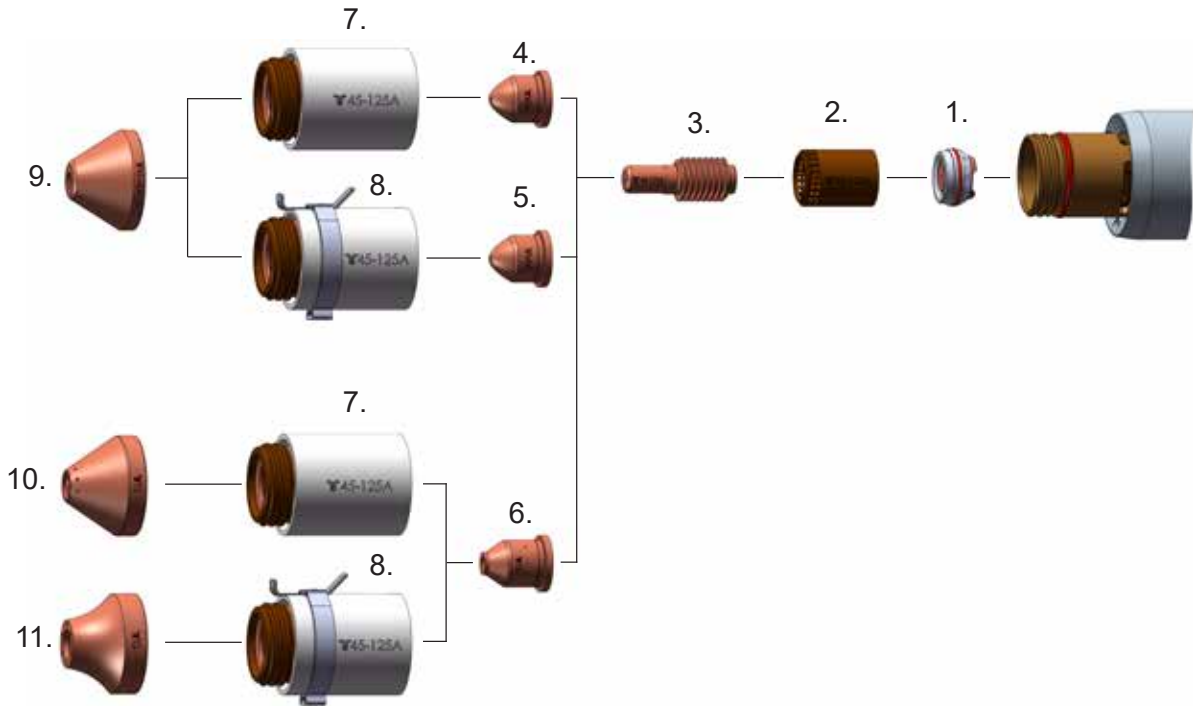
CONSUMABLES

MACHINE TORCH CONSUMABLES - MARKING



Item	Part No.	Description	Pcs	Item	Part No.	Description	Pcs
1.	EX-6-446-001	Swirl Ring Holder	1	5.	EX-6-415-021	Retaining Cap 45-125 A	1
2.	EX-6-404-021	Swirl Ring 45-125 A	1	6.	EX-6-415-022	Retaining Cap 45-125 A, IHS Tab	1
3.	EX-6-401-021	Electrode 45-125 A (5 pcs package)	1	7.	EX-6-445-002	Shield, Marking	1
4.	EX-6-445-001	Nozzle, Marking	1				

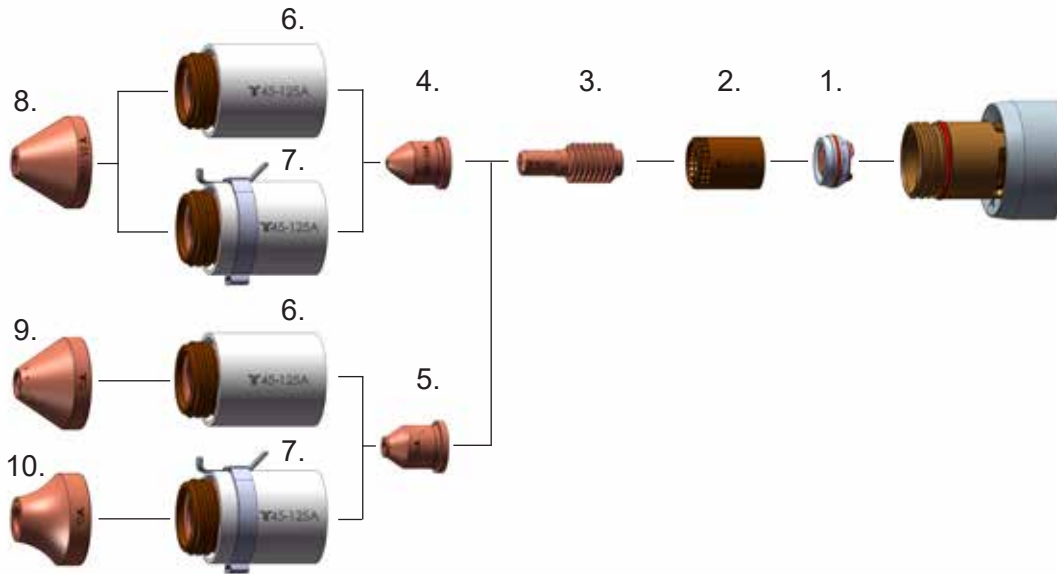
MACHINE TORCH CONSUMABLES - 45-65 A



Item	Part No.	Description	Pcs	Item	Part No.	Description	Pcs
1.	EX-6-446-001	Swirl Ring Holder	1	7.	EX-6-415-021	Retaining Cap 45-125 A	1
2.	EX-6-404-021	Swirl Ring 45-125 A	1	8.	EX-6-415-022	Retaining Cap 45-125 A, IHS Tab	1
3.	EX-6-401-021	Electrode 45-125 A (5 pcs package)	1	9.	EX-6-421-022	Shield 45-65 A, Machine	1
4.	EX-6-409-024	Nozzle 45 A	1	10.	EX-6-440-023	Gouging Shield, Standard	1
5.	EX-6-409-023	Nozzle 65 A	1	11.	EX-6-440-024	Gouging Shield, High Removal	1
6.	EX-6-440-020	Gouging Nozzle	1				

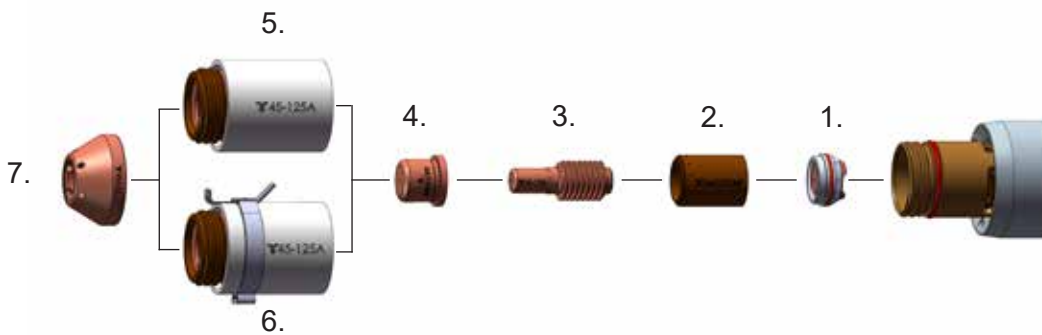
CONSUMABLES

MACHINE TORCH CONSUMABLES - 85-125 A



Item	Part No.	Description	Pcs	Item	Part No.	Description	Pcs
1.	EX-6-446-001	Swirl Ring Holder	1	6.	EX-6-415-021	Retaining Cap 45-125 A	1
2.	EX-6-404-021	Swirl Ring 45-125 A	1	7.	EX-6-415-022	Retaining Cap 45-125 A, IHS Tab	1
3.	EX-6-401-021	Electrode 45-125 A (5 pcs package)	1	8.	EX-6-421-021	Shield 85-125 A, Machine	1
4.	EX-6-409-021	Nozzle 85-125 A	1	9.	EX-6-440-023	Gouging Shield, Standard	1
5.	EX-6-440-020	Gouging Nozzle	1	10.	EX-6-440-024	Gouging Shield, High Removal	1

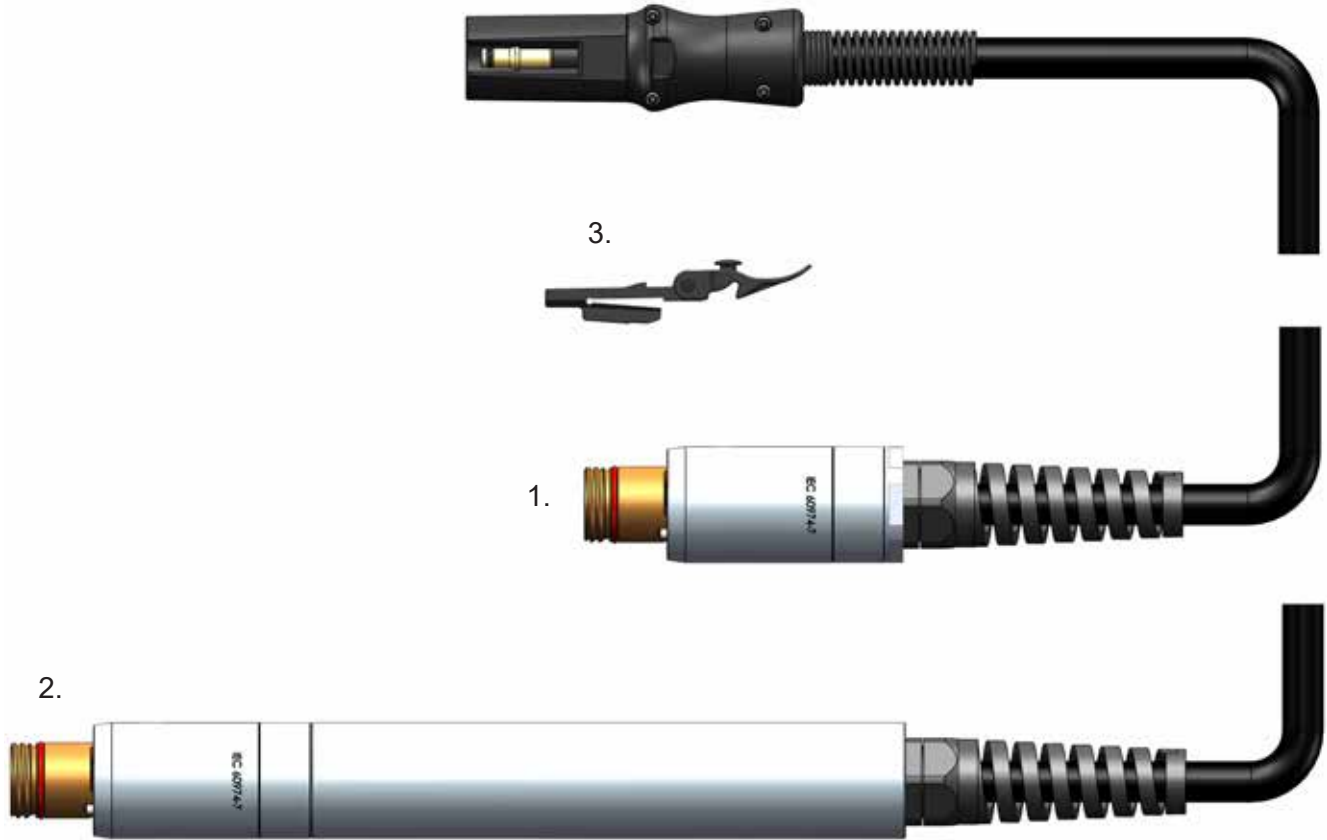
MACHINE TORCH CONSUMABLES - SMOOTHLINE



Item	Part No.	Description	Pcs	Item	Part No.	Description	Pcs
1.	EX-6-446-001	Swirl Ring Holder	1	5.	EX-6-415-021	Retaining Cap 45-125 A	1
2.	EX-6-440-021	Swirl Ring SmoothLine	1	6.	EX-6-415-022	Retaining Cap 45-125 A, IHS Tab	1
3.	EX-6-401-021	Electrode 45-125 A (5 pcs package)	1	7.	EX-6-414-022	SmoothLine Shield	1
4.	EX-6-414-021	SmoothLine Nozzle	1				

FHT-EX® 125TTM

MACHINE TORCH ASSEMBLY

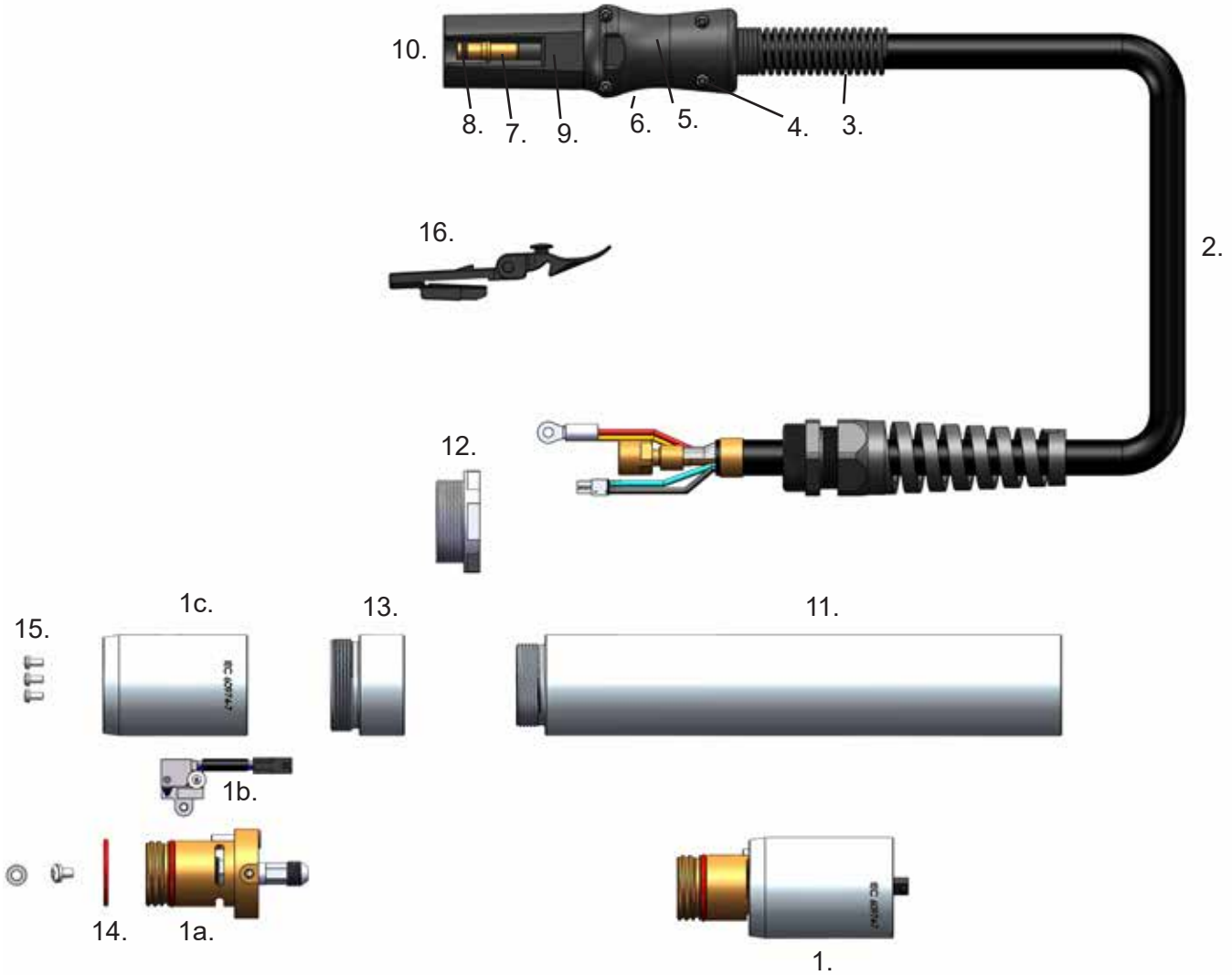


Item	Part No.	Description	Pcs
1.	EX-6-272-001	FHT-EX®125TTSM Short Machine Torch Assembly-w/o consumables w/5m (16.5') Lead/TCS13	1
1.	EX-6-272-002	FHT-EX®125TTSM Short Machine Torch Assembly-w/o consumables w/8m (26.2') Lead/TCS13	1
1.	EX-6-272-003	FHT-EX®125TTSM Short Machine Torch Assembly-w/o consumables w/15m (49.2') Lead/TCS13	1
1.	EX-6-272-004	FHT-EX®125TTSM Short Machine Torch Assembly-w/o consumables w/23m (75.5') Lead/TCS13	1
2.	EX-6-270-001	FHT-EX®125TTM Machine Torch Assy w/o consumables w/5m (16.5')Lead/TCS13	1
2.	EX-6-270-002	FHT-EX®125TTM Machine Torch Assy w/o consumables w/8m (26.2') Lead/TCS13	1
2.	EX-6-270-003	FHT-EX®125TTM Machine Torch Assy w/o consumables w/15m (49.2') Lead/TCS13	1
2.	EX-6-270-004	FHT-EX®125TTM Machine Torch Assy w/o consumables w/23m (75.5') Lead/TCS13	1
a 3.	EX-0-321-003	Latch with Key Assembly	1

a LATCH WITH KEY IS NOT CONTENT OF TORCHES ABOVE. IF YOU NEED IT, YOU HAVE TO ORDER SEPARATELY.

FHT-EX® 125TTM

MACHINE TORCH COMPONENTS

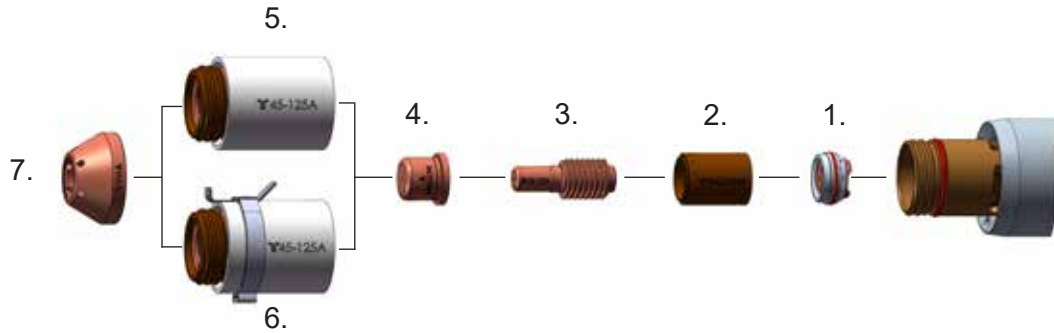


Item	Part No.	Description	Pcs	Item	Part No.	Description	Pcs
1.	EX-6-303-001	FHT-EX125TTM/TTSM Machine Torch Body Replacement Kit	1	7.	EX-0-325-010	Retaining Ring (Outer circlip ring)	1
1a.	EX-6-303-002	FHT-EX®125TTM/TTSM Machine Torch Body Assembly	1	8.	EX-0-325-009	O-Ring (fitted in the TCS plug)	1
1b.	EX-5-304-030	Cap Sensor Replacement Kit with Screws/Machine Torch	1	9.	EX-0-325-005	Male Crimp Pin for TCS Plug	1
1c.	EX-6-306-001	Torch Mounting Sleeve (incl. 3 screws)	1	10.	EX-0-323-001	TCS13 Plug Body	1
2.	EX-6-375-001	FHT-EX®125TT Machine Torch Lead Replacement 5m (16.5')/TCS13	1	11.	EX-6-306-002	Mounting Tube (dia 44.5mm, length 241mm)	1
2.	EX-6-375-002	FHT-EX®125TT Machine Torch Lead Replacement 8m (26.2')/TCS13	1	12.	EX-6-306-004	Strain Relief Thread Adaptor	1
2.	EX-6-375-003	FHT-EX®125TT Machine Torch Lead Replacement 15m (49.2')/TCS13	1	13.	EX-6-306-003	Reduction Nut	1
2.	EX-6-375-004	FHT-EX®125TT Machine Torch Lead Replacement 23m (75')/TCS13	1	14.	EX-6-431-001	O-Ring (fitted on the torch body)	1
3.	EX-5-318-001	TCS Plug Spring Strain Relief		15.	EX-5-372-005	Torch Mounting Screws Kit (incl. 3 screws)	1
4.	EX-0-325-015	TCS Clam Shell Screw Kit (incl. 4 screws)	1	a 16.	EX-0-321-003	Latch w/Key Assembly	1
5.	EX-0-325-002	TCS Clam Shell Upper	1				
6.	EX-0-325-001	TCS Clam Shell Lower	1				

a LATCH WITH KEY IS NOT CONTENT OF TORCHES ABOVE. IF YOU NEED IT, YOU HAVE TO ORDER SEPARATELY.

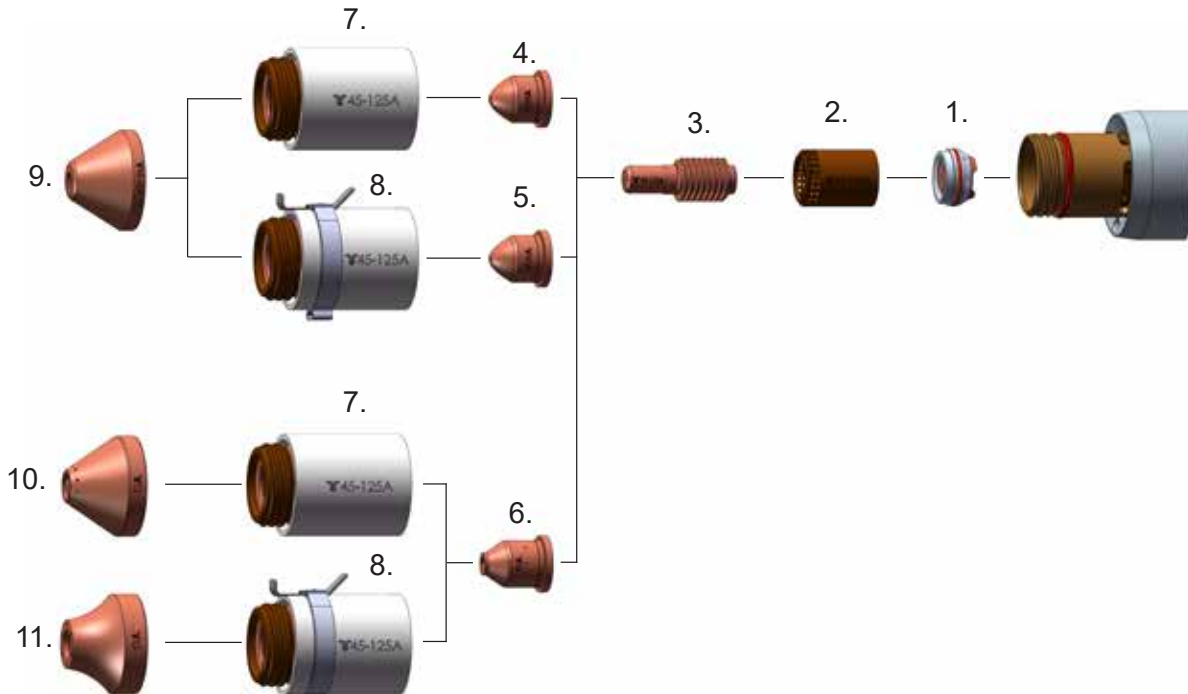
CONSUMABLES

MACHINE TORCH CONSUMABLES - MARKING



Item	Part No.	Description	Pcs	Item	Part No.	Description	Pcs
1.	EX-6-446-001	Swirl Ring Holder	1	5.	EX-6-415-021	Retaining Cap 45-125 A	1
2.	EX-6-404-021	Swirl Ring 45-125 A	1	6.	EX-6-415-022	Retaining Cap 45-125 A, IHS Tab	1
3.	EX-6-401-021	Electrode 45-125 A (5 pcs package)	1	7.	EX-6-445-002	Shield, Marking	1
4.	EX-6-445-001	Nozzle, Marking	1				

MACHINE TORCH CONSUMABLES - 45-65 A

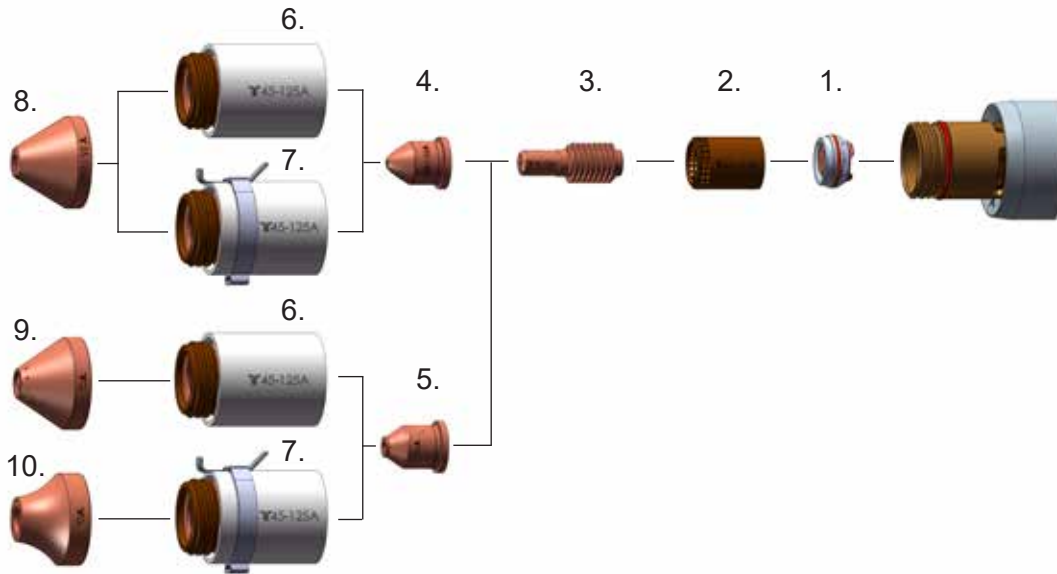


Item	Part No.	Description	Pcs	Item	Part No.	Description	Pcs
1.	EX-6-446-001	Swirl Ring Holder	1	7.	EX-6-415-021	Retaining Cap 45-125A	1
2.	EX-6-404-021	Swirl Ring 45-125A	1	8.	EX-6-415-022	Retaining Cap 45-125A, IHS Tab	1
3.	EX-6-401-021	Electrode 45-125A (5pcs package)	1	9.	EX-6-421-022	Shield 45-65A, Machine	1
4.	EX-6-409-024	Nozzle 45A	1	10.	EX-6-440-023	Gouging Shield, Standard	1
5.	EX-6-409-023	Nozzle 65A	1	11.	EX-6-440-024	Gouging Shield, High Removal	1
6.	EX-6-440-020	Gouging Nozzle	1				

Last update of this page: 18/07/2023. For product availability, please check with your local THERMACUT® dealer.

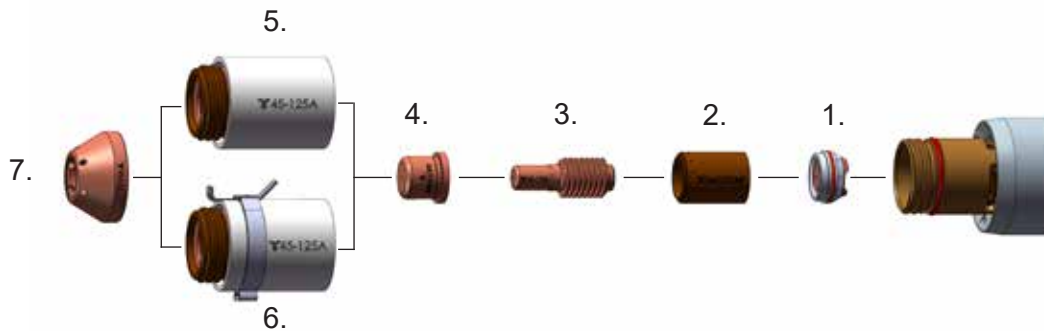
CONSUMABLES

MACHINE TORCH CONSUMABLES - 85-125 A



Item	Part No.	Description	Pcs	Item	Part No.	Description	Pcs
1.	EX-6-446-001	Swirl Ring Holder	1	6.	EX-6-415-021	Retaining Cap 45-125 A	1
2.	EX-6-404-021	Swirl Ring 45-125 A	1	7.	EX-6-415-022	Retaining Cap 45-125 A, IHS Tab	1
3.	EX-6-401-021	Electrode 45-125 A (5 pcs package)	1	8.	EX-6-421-021	Shield 85-125 A, Machine	1
4.	EX-6-409-021	Nozzle 85-125 A	1	9.	EX-6-440-023	Gouging Shield, Standard	1
5.	EX-6-440-020	Gouging Nozzle	1	10.	EX-6-440-024	Gouging Shield, High Removal	1

MACHINE TORCH CONSUMABLES - SMOOTHLINE



Item	Part No.	Description	Pcs	Item	Part No.	Description	Pcs
1.	EX-6-446-001	Swirl Ring Holder	1	5.	EX-6-415-021	Retaining Cap 45-125 A	1
2.	EX-6-440-021	Swirl Ring SmoothLine	1	6.	EX-6-415-022	Retaining Cap 45-125 A, IHS Tab	1
3.	EX-6-401-021	Electrode 45-125 A (5 pcs package)	1	7.	EX-6-414-022	SmoothLine Shield	1
4.	EX-6-414-021	SmoothLine Nozzle	1				

CONSUMABLES

AVAILABLE STARTER KIT



CONTENTS OF THE PACKAGE

- 4 pcs of electrodes
- 4 pcs of nozzles
- 4 pcs of Hand/Machine shields
- 1 pc of swirl ring
- 1 pc of torch body O-ring

Part No.	Description	Std. package QTY
EX-6-432-001	Starter Kit 125A for Hand Torch FHT-EX®125TTH	1
EX-6-433-001	Starter Kit 125A for Machine Torch FHT-EX®125TTM	1

CONSUMABLES

ACCESSORIES



ACCESSORIES

Item	Part No.	Ref. No.	Description	Pcs
1.	T-12452	EX-0-804-001	Filter-EX Compressed Air Filter	1
2.	T-12453	EX-0-804-002	Filter-EX Air Filter Cartridge	8
3.	EX-0-802-001	EX-0-802-001	Quick Connect Plug with male thread G 1/4" *	1
4.	EX-0-802-002	EX-0-802-002	Quick Connect Coupling with male thread G 1/4" *	1
5.	T-0994	EX-0-805-001	Silicone Lubricant 0.8 oz	1
6.	EX-2-801-001	EX-2-801-001	Circle Cut. Guide Kit for FHT-EX®30/40H	1
	EX-5-801-002	EX-5-801-002	Circle cutting guide kit FHT-EX®105RTX/45TT	1
7.	EX-5-801-003	EX-5-801-003	Bevel cutting guide kit FHT-EX®105RTXH/105TTH/45TTH	1
8.	N-21811	EX-0-806-001	THERMACUT® Cutting Gloves	1
9.	EX-0-803-001	EX-0-803-001	CNC Interface 14-pin Plug Kit	1
10.	EX-0-803-003	EX-0-803-003	CNC Interface connection lead 9.8 ft	1
	EX-0-803-004	EX-0-803-004	CNC Interface connection lead 19.6 ft	1
OD 11.	EX-0-803-006	EX-0-803-006	CAN bus connection cable 32.8'	1
	EX-0-803-007	EX-0-803-007	CAN bus connection cable 16.4'	1
OD 12.	EX-0-803-008	EX-0-803-008	RS422 bus connection cable 32.8'	1
	EX-0-803-009	EX-0-803-009	RS422 bus connection cable 16.4'	1
13.	EX-0-803-010	EX-0-803-010	Universal connection cable 32.8'	1
OD	EX-0-803-011	EX-0-803-011	Universal connection cable 16.4'	1
14.	EX-0-803-005	EX-0-803-005	Plasma Arc START/STOP Remote controller for power supplies equipped with CNCinterface	1
15.	EX-5-543-037	EX-5-543-037	Work lead with clamp 300 A/13.1 ft/6 AWG/EU-plug 2-2/0 AWG	1
OD	EX-5-543-001	EX-5-543-001	Work lead with clamp 300 A/26.2 ft/6 AWG/EU-plug 2-2/0 AWG	1
OD	EX-5-543-002	EX-5-543-002	Work lead with clamp 300 A/49.2 ft/6 AWG/EU-plug 2-2/0 AWG	1
OD	EX-5-543-003	EX-5-543-003	Work lead with clamp 300 A/75.4 ft/6 AWG/EU-plug 2-2/0 AWG	1
16.	EX-6-810-001	EX-6-810-001	Hand gouging heat shield	1

OD Only ON DEMAND

* Items for use with Filter EX

THINK FRESH. CUT ORANGE.

THERMACUT® comes up with fresh ideas for cutting technology.
Benefit from innovative, reliable, powerful and highly efficient cutting solutions.

THERMACUT, INC
PO BOX 842
CLAREMONT, NH 03743

EMAIL: SALES@THERMACUT.COM
PHONE: +1(800)932-8312
WWW.THERMACUT.COM

follow
#EXTRAFIRE

